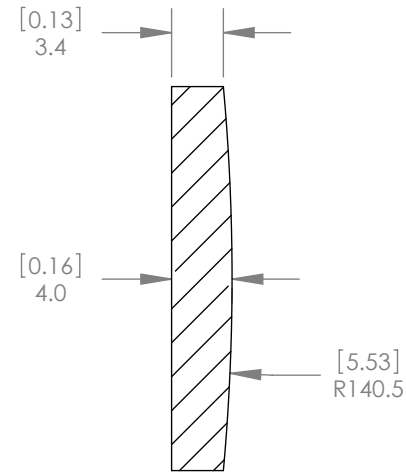
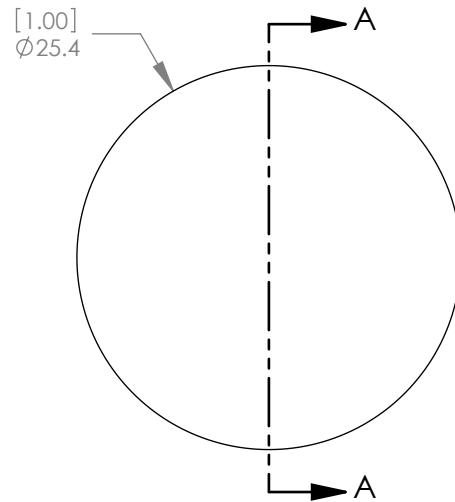




1:1 ISOMETRIC VIEW FOR REFERENCE ONLY



SECTION A-A

NOTES/SPECIFICATIONS:

- DESIGN WAVELENGTH: 10.6 μ m
- FOCAL LENGTH: 100.17mm \pm 1%
- BACK FOCAL LENGTH (REF): 98.50mm
- CLEAR APERTURE: >80%
- SURFACE QUALITY: 60-40 SCRATCH-DIG
- CENTRATION: <3 arcmin
- DIAMETER TOLERANCE: +0.0/-0.1mm
- THICKNESS TOLERANCE: \pm 0.1mm
- COATING: BBAR Ravg <1.5% FROM 8 μ m-12 μ m, 0° AOI, ON BOTH OPTICAL SURFACES

ALL DIMENSIONS ARE IN THE FORM $\frac{[in]}{mm}$.
 THIS DRAWING IS FOR INFORMATION ONLY
 NOT INTENDED FOR MANUFACTURING

THORLABS INC. PO BOX 366
 NEWTON NJ

	NAME	DATE
DRAWN	WD	8/27/2009
ENG APPR.	BW	9/03/2009
MFG APPR.	PM	9/08/2009

TITLE: ZnSe Plano-Convex Lens, f = 100.00 mm,
 DIA = 25.40 mm, BBAR: 8-12 μ m

MATERIAL: ZINC SELENIDE CVD (LASER GRADE) SIZE A REV. A

SCALE: 2:1 SHEET 1 OF 1

DWG. NO. 20187-E01 PART NO. LA7261-F