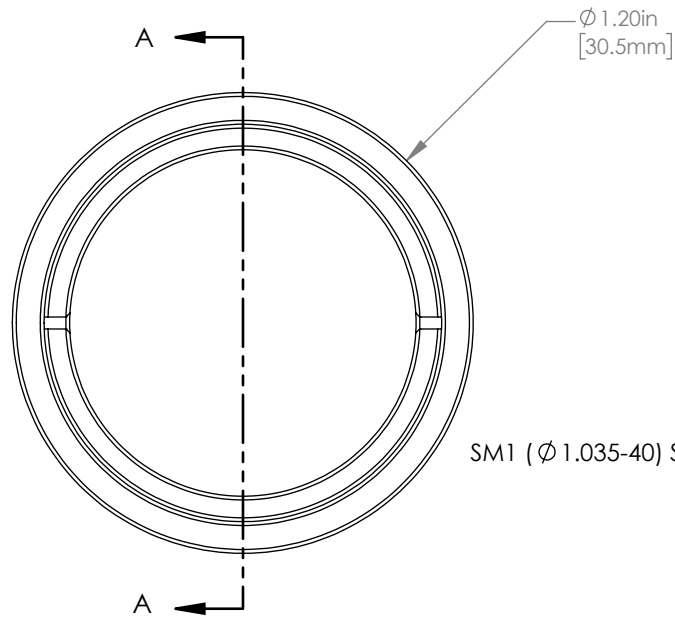
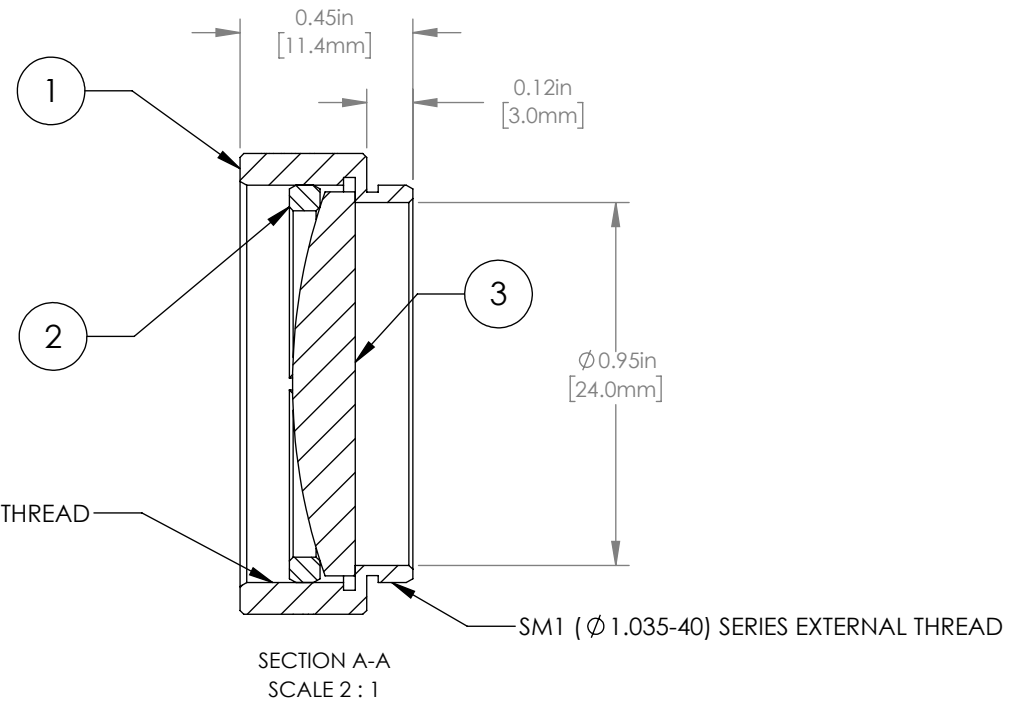


	PART DESCRIPTION	MATERIAL
①	ENGRAVED HOUSING	ANODIZED ALUMINUM
②	SM1RR	ANODIZED ALUMINUM
③	LA1608-A	N-BK7



SM1 ($\varnothing 1.035-40$) SERIES INTERNAL THREAD



NOTES/SPECIFICATIONS:

1. DESIGN WAVELENGTH: 587.6 nm
2. FOCAL LENGTH: $f=74.8\text{ mm} \pm 1\%$
3. WORKING DISTANCE: 68.2 mm
4. CLEAR APERTURE: $\varnothing 22.9\text{ mm}$
5. SURFACE QUALITY: 40-20 SCRATCH-DIG
6. COATING: BBAR 350-700 nm, $R_{\text{avg}} < 0.5\%$, 0° AOI

FOR INFORMATION ONLY
 NOT FOR MANUFACTURING PURPOSES

DRAWING PROJECTION				THORLABS www.thorlabs.com	
NAME	DATE	MOUNTED $\varnothing 25.4\text{ mm}$, $f = 75.0\text{ mm}$ PLANO CONVEX LENS, A COATED			
DRAWN	GG	22/AUG/19	MATERIAL		
APPROVAL	DD	22/AUG/19	SEE TABLE		REV B
COPYRIGHT © 2019 BY THORLABS					
VALUES IN PARENTHESIS ARE CALCULATED AND MAY CONTAIN ROUND OFF ERRORS					
ITEM #			APPROX WEIGHT		
LA1608-A-ML			10 g		