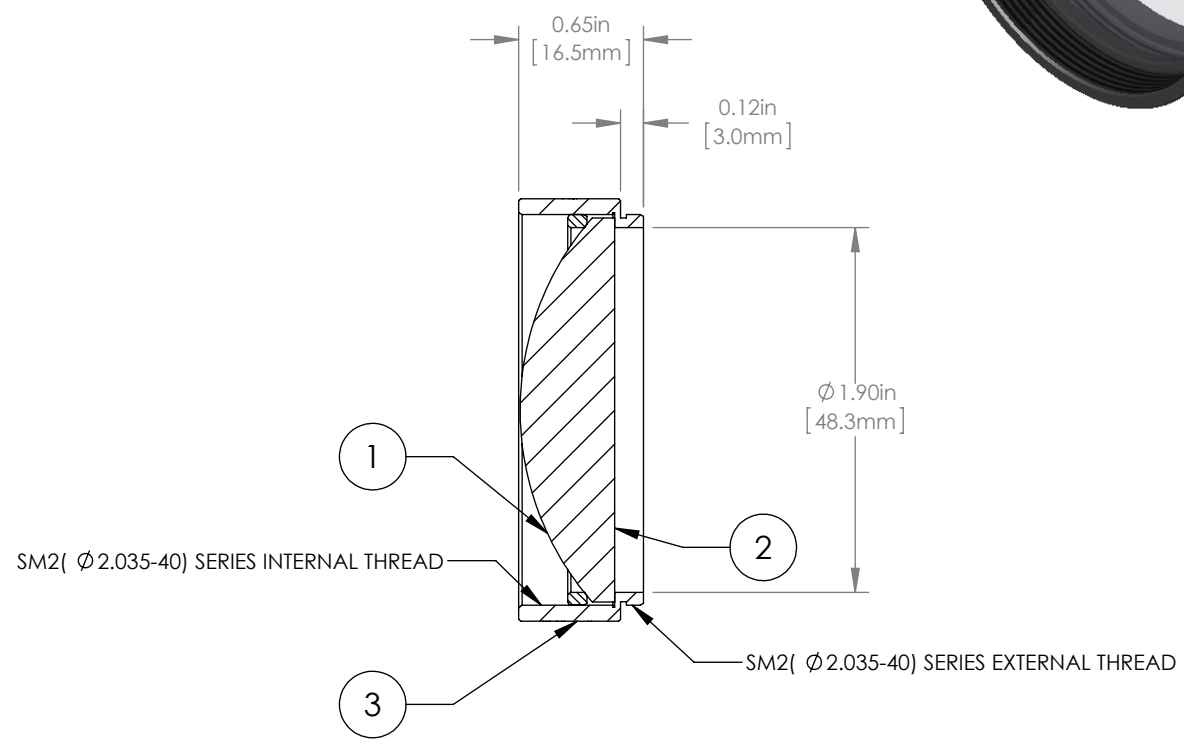
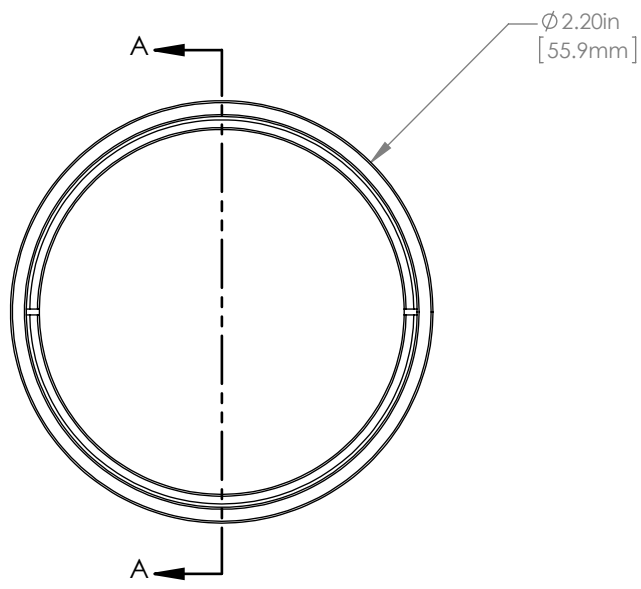


	PART DESCRIPTION	MATERIAL
①	SM2RR	ANODIZED ALUMINUM
②	LA1145-A	N-BK7
③	ENGRAVED HOUSING	ANODIZED ALUMINUM



NOTES/SPECIFICATIONS:

- DESIGN WAVELENGTH: 633nm
- FOCAL LENGTH: $f=75.0\text{mm} \pm 1\%$
- WORKING DISTANCE (REF): 62.9mm
- CLEAR APERTURE: $> \varnothing 45.72\text{mm}$
- SURFACE QUALITY: 40-20 SCRATCH-DIG
- COATING: BBR $R_{\text{avg}} < 0.5\%$ FROM 350-700nm, AOI: 0°, ON OUTER OPTICAL SURFACES

FOR INFORMATION ONLY
NOT FOR MANUFACTURING PURPOSES

DRAWING PROJECTION			
	NAME	DATE	
DRAWN	GG	15/OCT/15	
APPROVAL	DD	15/OCT/15	
COPYRIGHT © 2015 BY THORLABS			
VALUES IN PARENTHESIS ARE CALCULATED AND MAY CONTAIN ROUND OFF ERRORS			

 www.thorlabs.com	
$\varnothing 2"$ MOUNTED PLANO-CONVEX LENS, $f=75\text{mm}$, -A COAT	
MATERIAL	SEE TABLE
ITEM #	LA1145-A-ML
APPROX WEIGHT	57 g
REV	A