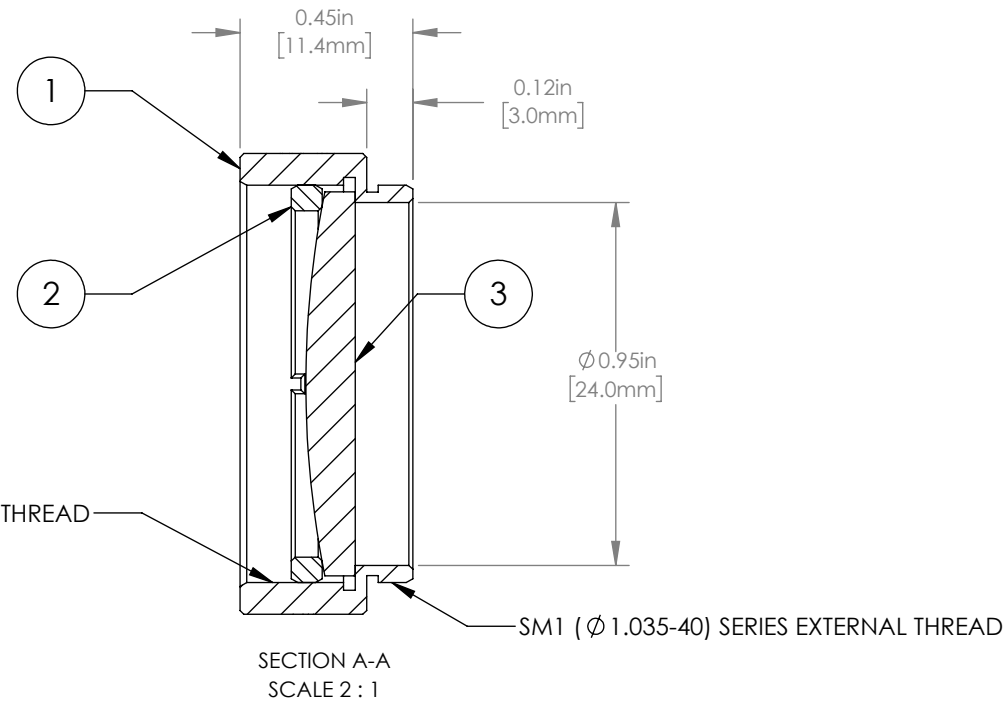
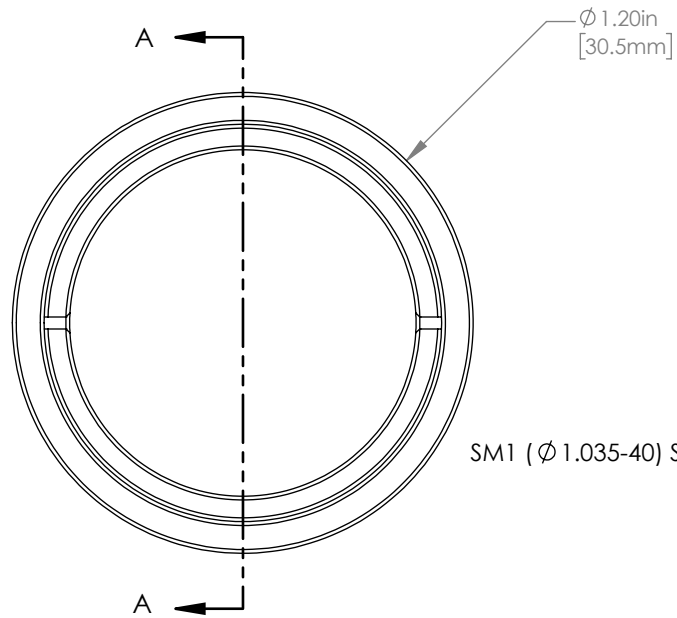


	PART DESCRIPTION	MATERIAL
①	ENGRAVED HOUSING	ANODIZED ALUMINUM
②	SM1RR	ANODIZED ALUMINUM
③	LA1986	N-BK7



SM1 ($\varnothing 1.035-40$) SERIES INTERNAL THREAD

SM1 ($\varnothing 1.035-40$) SERIES EXTERNAL THREAD

NOTES/SPECIFICATIONS:

- DESIGN WAVELENGTH: 587.6 nm
- FOCAL LENGTH: $f=124.6\text{ mm} \pm 1\%$
- WORKING DISTANCE: 118.6 mm
- CLEAR APERTURE: $\varnothing 22.9\text{ mm}$
- SURFACE QUALITY: 40-20 SCRATCH-DIG

FOR INFORMATION ONLY
NOT FOR MANUFACTURING PURPOSES

DRAWING PROJECTION			THORLABS www.thorlabs.com
NAME	DATE	MOUNTED $\varnothing 25.4\text{ mm}$, $f = 125.0\text{ mm}$ PLANO CONVEX LENS	
DRAWN	GG	22/AUG/19	MATERIAL
APPROVAL	DD	22/AUG/19	SEE TABLE
COPYRIGHT © 2019 BY THORLABS			REV B
VALUES IN PARENTHESIS ARE CALCULATED AND MAY CONTAIN ROUND OFF ERRORS			ITEM # LA1986-ML
			APPROX WEIGHT 9 g