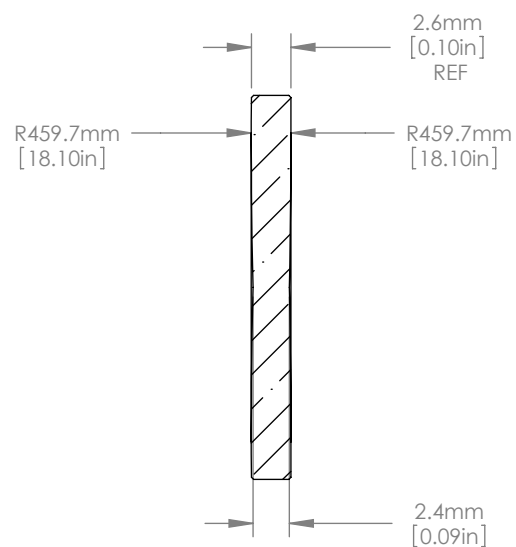
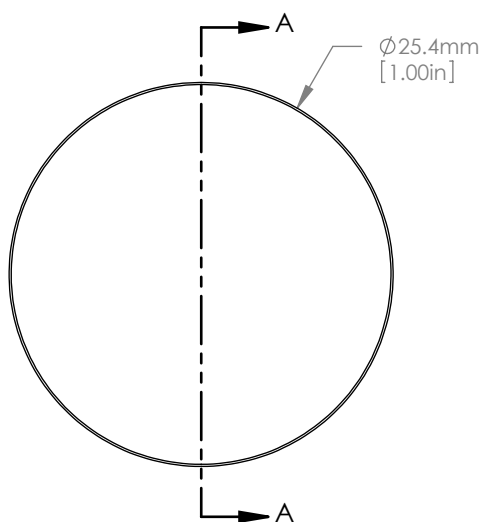




SCALE 1:1



NOTES/SPECIFICATIONS:

1. DESIGN WAVELENGTH: 588nm
2. FOCAL LENGTH: $f=500.0\text{mm} \pm 1\%$
3. BACK FOCAL LENGTH(REF): $bf=499.2\text{mm}$
4. CLEAR APERTURE: $>90\%$
5. SURFACE QUALITY: 40-20 SCRATCH-DIG
6. CENTRATION: $\leq 3\text{arcmin}$
7. DIAMETER TOLERANCE: $+0.0/-0.1\text{mm}$
8. THICKNESS TOLERANCE: $\pm 0.1\text{mm}$

FOR INFORMATION ONLY
NOT FOR MANUFACTURING PURPOSES

| | | | | |
|--|------|-----------|--|--|
| DRAWING PROJECTION | | | THORLABS www.thorlabs.com D=25.4mm F=500.0mm UVFS BI CONVEX LENS | |
| NAME | DATE | | | |
| DRAWN | GG | 15/NOV/10 | MATERIAL UV GRADE FUSED SILICA | |
| APPROVAL | JC | 13/DEC/10 | | |
| COPYRIGHT © 2010 BY THORLABS | | | ITEM # LB4453 | APPROX WEIGHT 0.03 kg |
| <small>VALUES IN PARENTHESIS ARE CALCULATED AND MAY CONTAIN ROUND OFF ERRORS</small> | | | | |