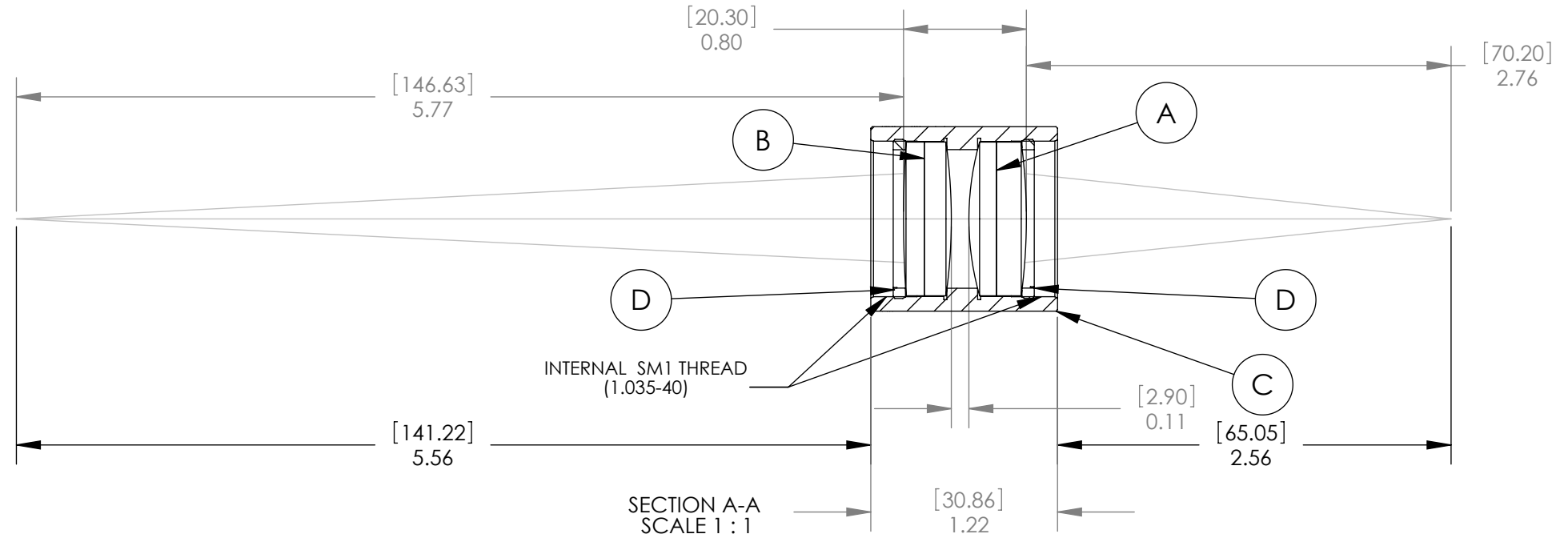
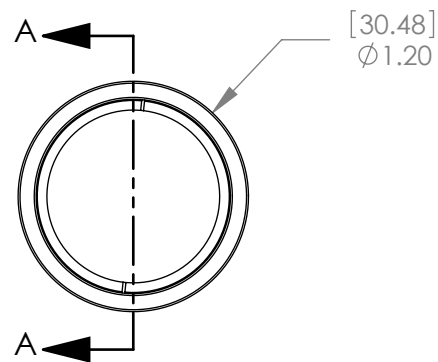


PART	PART NO.	MATERIAL
A	AC254-075-A1	BK7-SF5
B	AC254-150-A1	BK7-SF5
C	LENS MOUNT	6061-T6 ALUMINUM
D	SM1RR	6061-T6 ALUMINUM



SPECIFICATIONS:

DESIGN WAVELENGTH: 486.1, 587.6, & 656.3nm
 COATING: BBAR 400-700nm
 COATING RANGE: R(AVG)<0.5% FROM 400-700nm
 MAGNIFICATION: 1:2

DIMENSIONS ARE IN $\frac{[mm]}{in}$

NOTE:
 FOR INFORMATION ONLY, NOT INTENDED FOR MANUFACTURING

	NAME	DATE
DRAWN	AP	04/12/06
ENG APPR.	TO	04/13/06
MFG APPR.	TO	04/13/06

PROPRIETARY AND CONFIDENTIAL
 THE INFORMATION CONTAINED IN THIS DRAWING IS THE SOLE PROPERTY OF THORLABS, INC. ANY REPRODUCTION IN PART OR AS A WHOLE WITHOUT THE WRITTEN PERMISSION OF THORLABS, INC. IS PROHIBITED.

THORLABS, INC. PO BOX 366
 NEWTON NJ

TITLE:
 MATCHED ACHROMATIC PAIR F1=75mm F2=150mm

MATERIAL: SEE TABLE **SIZE** B **REV** C

SCALE: 1:1 **SHEET** 1 OF 1

DWG. NO. 13301-E01 **PART NO.** MAP1075150-A1