

NOTES:

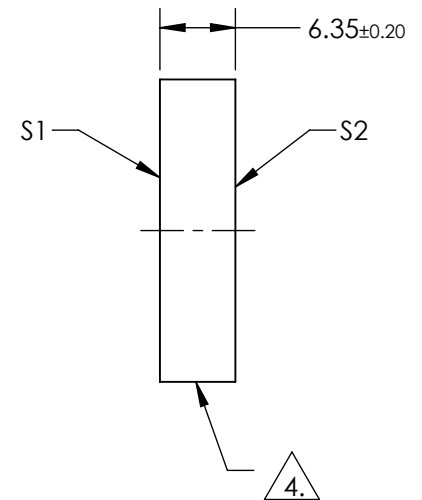
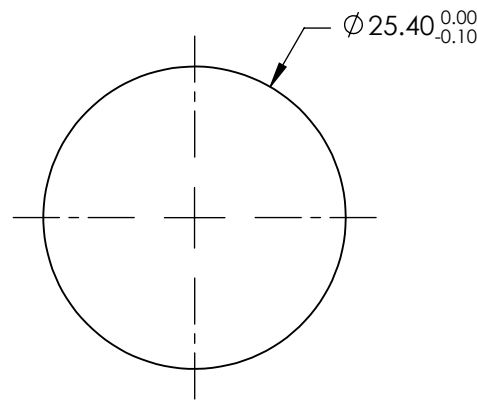
1. SUBSTRATE: FUSED SILICA
2. SURFACE S2 TO BE PARALLEL TO SURFACE S1 TO WITHIN <3 ARCMIN
3. COATING (APPLY ACROSS COATING APERTURE)
 S1: Laser V-Coat (1064nm)
 R(ABS) <0.25% @ 1064nm @ 0 ±5° AOI

DAMAGE THRESHOLD,
 PULSED: 15 J/cm² @ 1064nm, 20ns, 20Hz

S2: NONE

4. FINE GRIND SURFACE

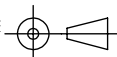
5. ROHS: COMPLIANT



**FOR INFORMATION ONLY:
 DO NOT MANUFACTURE
 PARTS TO THIS DRAWING**

SPECIFICATIONS SUBJECT TO CHANGE WITHOUT NOTICE
 DIMENSIONS ARE FOR REFERENCE ONLY

	S1	S2
SHAPE	PLANO	PLANO
SURFACE QUALITY	10-5	10-5
CLEAR APERTURE	90 %	90 %
BEVEL	PROTECTIVE AS NEEDED	PROTECTIVE AS NEEDED

THIRD ANGLE PROJECTION 

ALL DIMS IN mm

EO® **Edmund Optics**®

TITLE	25.4mm Dia. 1064nm, Nd:YAG Laser Line Beam Sampler	
DWG NO	39017	SHEET 1 OF 1