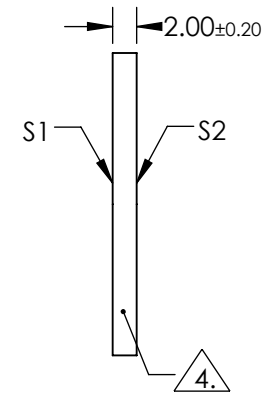
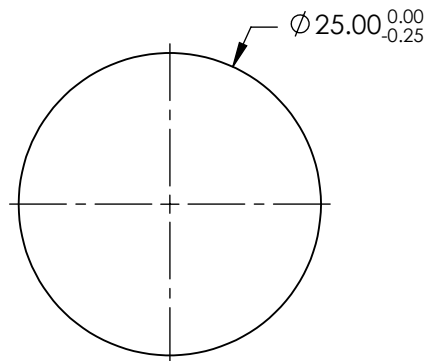
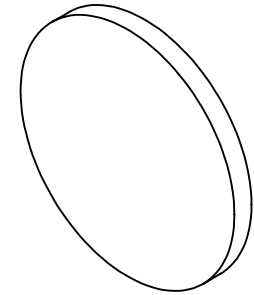


NOTES:

1. SUBSTRATE: N-BK7
2. S2 TO BE PARALLEL WITH S1 TO < 1ARCMIN
3. COATING (APPLY ACROSS CLEAR APERTURE)
 S1 & S2: R(ABS) <0.25% @ 532nm
 R(ABS) <0.25% @ 1064nm
 R(AVG) <1.0% @ 500 - 1100nm

4. FINE GRIND SURFACE

5. RoHS COMPLIANT



**FOR INFORMATION ONLY:
DO NOT MANUFACTURE
PARTS TO THIS DRAWING**

SPECIFICATIONS SUBJECT TO CHANGE WITHOUT NOTICE
DIMENSIONS ARE FOR REFERENCE ONLY

EO® Edmund Optics®

| | S1 | S2 |
|-----------------|----------------------|----------------------|
| SHAPE | PLANO | PLANO |
| SURFACE QUALITY | 60-40 | 60-40 |
| CLEAR APERTURE | $\phi 22.50$ | $\phi 22.50$ |
| BEVEL | PROTECTIVE AS NEEDED | PROTECTIVE AS NEEDED |



ALL DIMS IN mm

TITLE

25mm DIA., 2mm THICK, YAG-BBAR COATED,
 $\lambda/4$ N-BK7 WINDOW

DWG NO

13317

SHEET
1 OF 1