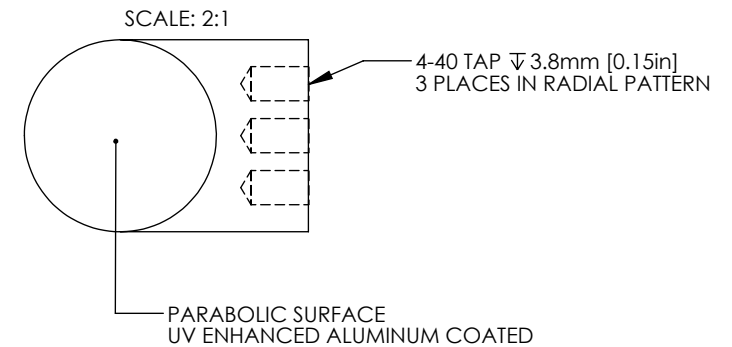
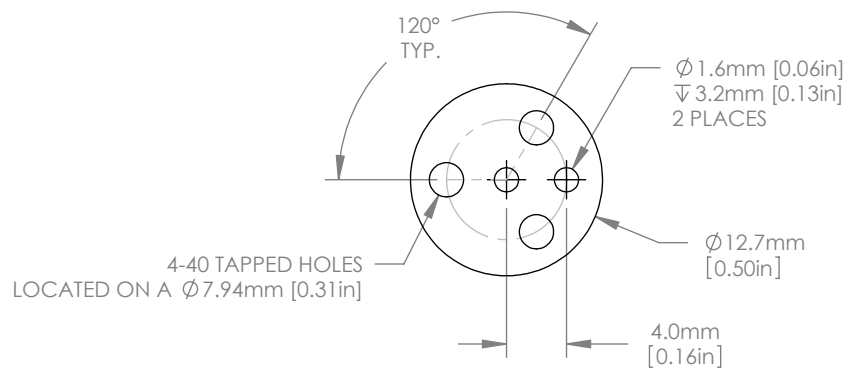


1:1 ISOMETRIC VIEW



NOTES/SPECIFICATIONS:

1. PFL(PARENT FOCAL LENGTH): 25.4mm ±1%
2. REFLECTED FOCAL LENGTH: 50.8mm ±1%
3. CLEAR APERTURE: >90% OF DIAMETER
4. SURFACE IRREGULARITY: 0.25λ @ 633nm
5. SURFACE QUALITY: 40-20 SCRATCH-DIG
6. SURFACE ROUGHNESS: <100A RMS
7. COATING (PARABOLIC SURFACE): UV ENHANCED ALUMINUM  
Ravg>90% FROM 250-450nm
8. BLACK ANODIZED FINISH (NON-OPTICAL SURFACES)

FOR INFORMATION ONLY  
NOT FOR MANUFACTURING PURPOSES

|   |      |            |  |               |
|---|------|------------|--|---------------|
| DRAWING PROJECTION  |      |            | <br><a href="http://www.thorlabs.com">www.thorlabs.com</a>         |               |
| NAME  | DATE |            |  |               |
| DRAWN   | MG   | 25/JULY/12 | Ø 12.7mm 90° OFF AXIS PARABOLA<br>PFL=25.4mm, UV ENHANCED ALUMINUM |               |
| APPROVAL  | DD   | 30/JULY/12 | MATERIAL   |               |
| COPYRIGHT © 2012 BY THORLABS  |      |            | 6061-T6 ALUMINUM   |               |
| VALUES IN PARENTHESIS ARE CALCULATED AND MAY CONTAIN ROUND OFF ERRORS |      |            | ITEM #   | APPROX WEIGHT |
|   |      |            | MPD127254-90-F01   | 0.01 kg       |
|   |      |            | REV  | A             |