

NOTES:

1. SUBSTRATE MATERIAL:
FUSED SILICA

2. COATING (APPLY ACROSS CLEAR APERTURE)

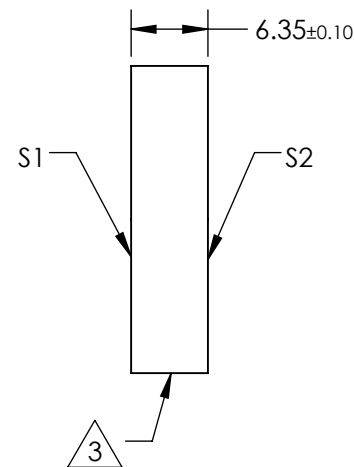
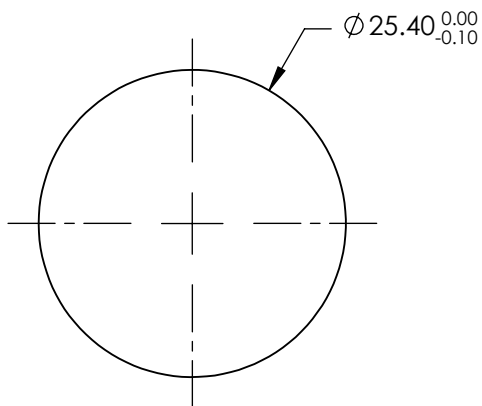
S1: Ultrafast Laser
R(AVG) >99.5% @ 760 - 840nm

S2: NONE

 FINE GROUND SURFACE

4. RoHS COMPLIANT

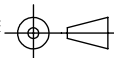
**FOR INFORMATION ONLY:
DO NOT MANUFACTURE
PARTS TO THIS DRAWING**



SPECIFICATIONS SUBJECT TO CHANGE WITHOUT NOTICE
DIMENSIONS ARE FOR REFERENCE ONLY

| REV. A | S1 | S2 |
|--------------------|----------------------|----------------------|
| SHAPE | PLANO | PLANO |
| CLEAR APERTURE (%) | Ø22.86 | N/A |
| SURFACE QUALITY | 20-10 | COMMERCIAL POLISH |
| SURFACE FLATNESS | λ/6 | N/A |
| BEVEL | PROTECTIVE AS NEEDED | PROTECTIVE AS NEEDED |

THIRD ANGLE
PROJECTION



ALL DIMS IN

mm

 **Edmund Optics®**

TITLE

760 - 840nm, 25.4mm Dia. x 6.35mm
Thickness, Ultrafast Laser Line Mirror

DWG NO

17284

SHEET
1 OF 1