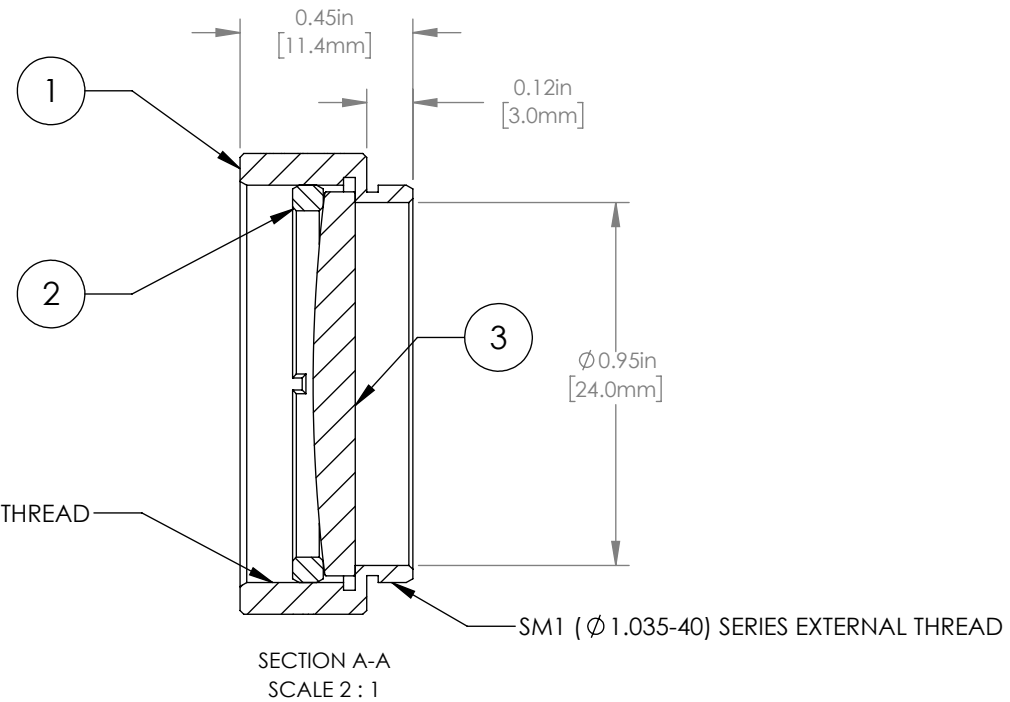
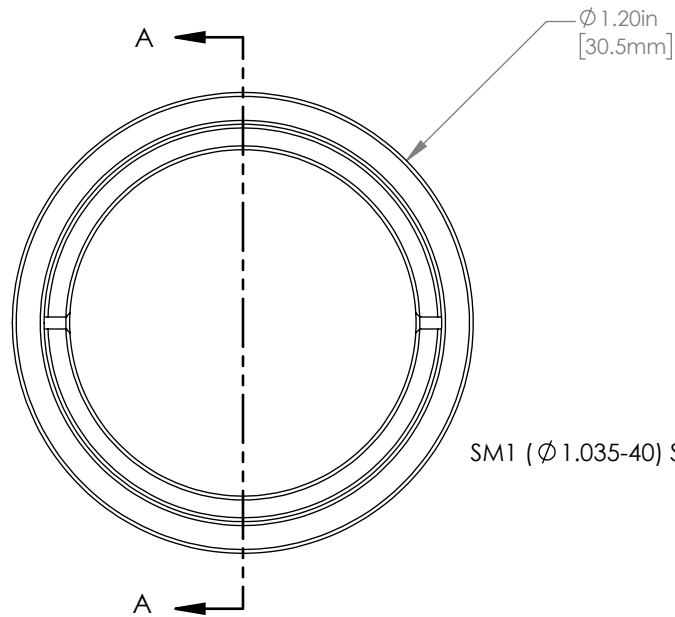


	PART DESCRIPTION	MATERIAL
①	ENGRAVED HOUSING	ANODIZED ALUMINUM
②	SM1RR	ANODIZED ALUMINUM
③	LA1708-C	N-BK7



SM1 ( $\varnothing 1.035-40$ ) SERIES INTERNAL THREAD

SM1 ( $\varnothing 1.035-40$ ) SERIES EXTERNAL THREAD

NOTES/SPECIFICATIONS:

1. DESIGN WAVELENGTH: 587.6 nm
2. FOCAL LENGTH:  $f=199.3\text{ mm} \pm 1\%$
3. WORKING DISTANCE: 193.7 mm
4. CLEAR APERTURE:  $\varnothing 22.9\text{ mm}$
5. SURFACE QUALITY: 40-20 SCRATCH-DIG
6. COATING: BBAR 1050-1700 nm,  $R_{\text{avg}} < 0.5\%$ ,  $0^\circ$  AOI

FOR INFORMATION ONLY  
NOT FOR MANUFACTURING PURPOSES

DRAWING PROJECTION						<b>THORLABS</b> www.thorlabs.com	
NAME	DATE	MOUNTED $\varnothing 25.4\text{ mm}$ , $f = 200.0\text{ mm}$ PLANO CONVEX LENS, C COATED				REV B	
DRAWN	GG	22/AUG/19	MATERIAL				SEE TABLE
APPROVAL	DD	22/AUG/19	ITEM #				APPROX WEIGHT
COPYRIGHT © 2019 BY THORLABS VALUES IN PARENTHESIS ARE CALCULATED AND MAY CONTAIN ROUND OFF ERRORS		LA1708-C-ML		9 g			