

NOTES:

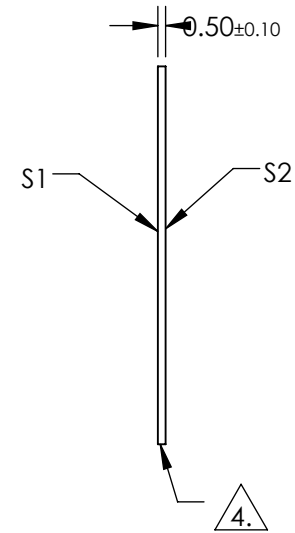
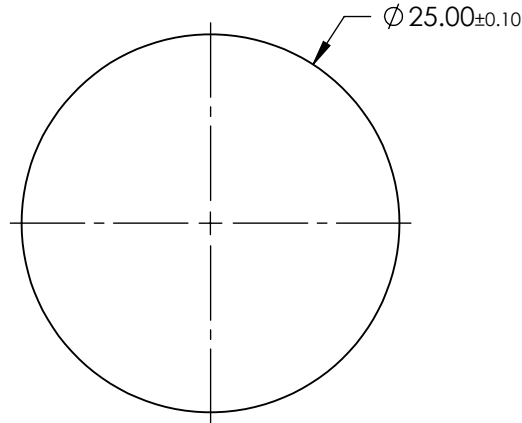
1. SUBSTRATE:
SAPPHIRE (AL₂O₃)
2. SURFACE S2 TO BE PARALLEL WITH SURFACE S1 TO WITHIN ≤ 3.5 ARCMIN
3. COATING (APPLY ACROSS CLEAR APERTURE)

S1 & S2: R(AVG) ≤ 0.25% @ 880nm
 R(AVG) ≤ 1.25% @ 400 - 870nm
 R(AVG) ≤ 1.25% @ 890 - 1000nm

 FINE GRIND SURFACE

5. ROHS COMPLIANT

**FOR INFORMATION ONLY:
DO NOT MANUFACTURE
PARTS TO THIS DRAWING**



SPECIFICATIONS SUBJECT TO CHANGE WITHOUT NOTICE
 DIMENSIONS ARE FOR REFERENCE ONLY

	S1	S2
SHAPE	PLANO	PLANO
CLEAR APERTURE	Ø22.50	Ø22.50
SURFACE FLATNESS	2λ	2λ
SURFACE QUALITY	80-50	80-50
BIREFRINGENCE (n _o -n _e)	0.008	0.008
BEVEL	PROTECTIVE AS NEEDED	PROTECTIVE AS NEEDED



ALL DIMS IN mm

 **Edmund Optics®**

TITLE

25mm Dia., 0.5mm Thick, VIS-NIR AR Coated
Sapphire Window

DWG NO

20810

SHEET
1 OF 1