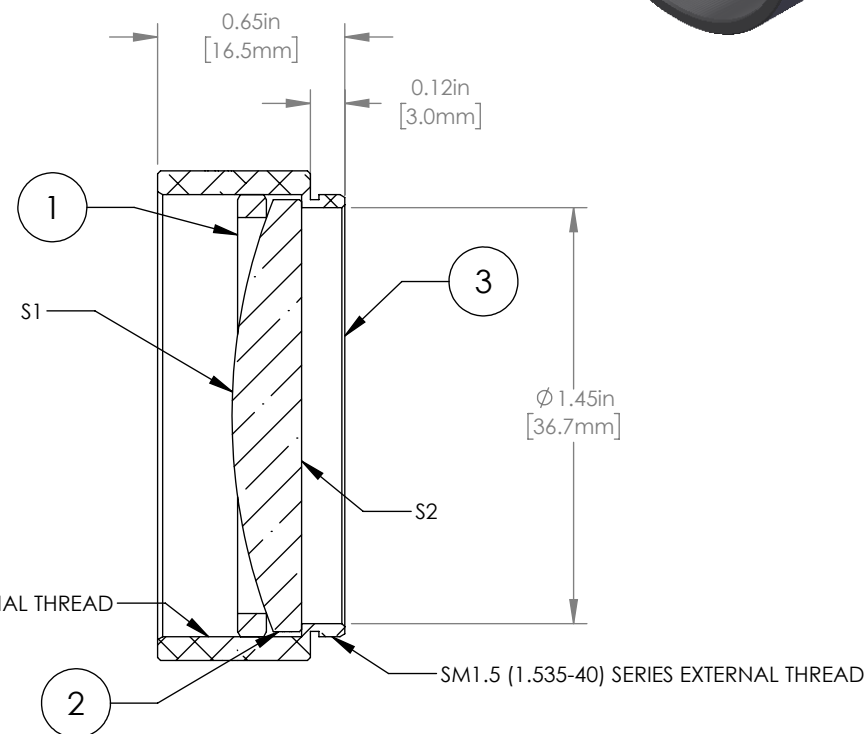
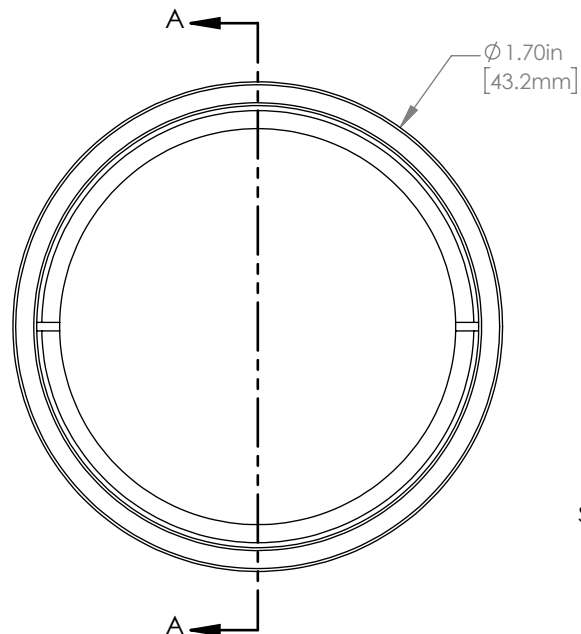


	PART DESCRIPTION	MATERIAL
①	SM1.5RR	ANODIZED ALUMINUM
②	LA1387	N-BK7
③	ENGRAVED HOUSING	ANODIZED ALUMINUM



SECTION A-A

NOTES/SPECIFICATIONS:

1. DESIGN WAVELENGTH: 587.6 nm
2. FOCAL LENGTH: $f=100.0 \text{ mm} \pm 1\%$
3. WORKING DISTANCE (REF): 93.0 mm
4. CLEAR APERTURE: $>\text{Ø}34.29 \text{ mm}$
5. SURFACE QUALITY: 40-20 SCRATCH-DIG

FOR INFORMATION ONLY
NOT FOR MANUFACTURING PURPOSES

DRAWING PROJECTION			THORLABS www.thorlabs.com MOUNTED Ø38.1 mm f=100.0 mm N-BK7 PLANO CONVEX LENS	
NAME	DATE			
DRAWN	CP	19/NOV/19	MATERIAL	
APPROVAL	DD	19/NOV/19		
COPYRIGHT © 2020 BY THORLABS			SEE TABLE	REV A
VALUES IN PARENTHESIS ARE CALCULATED AND MAY CONTAIN ROUND OFF ERRORS			ITEM #	APPROX WEIGHT
			LA1387-ML	26 g