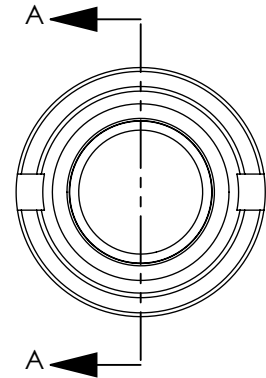
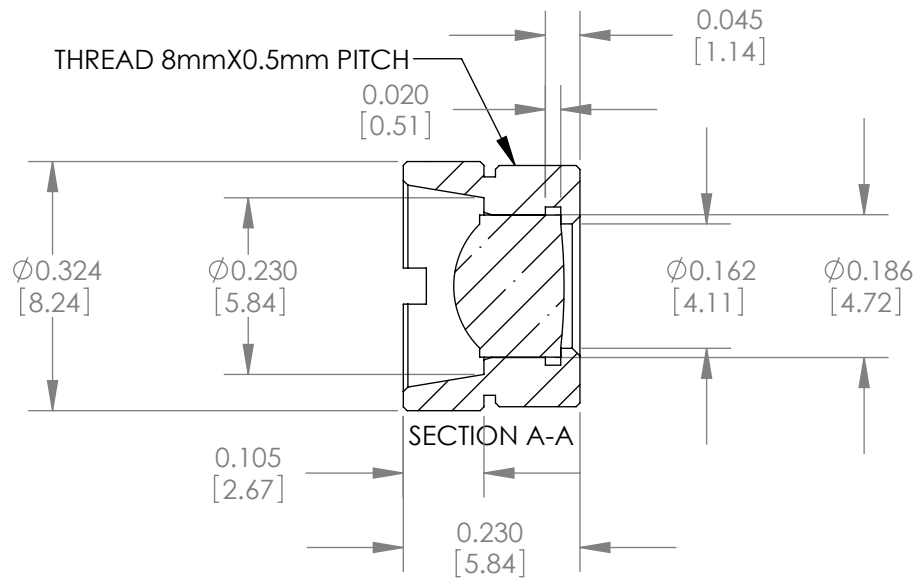
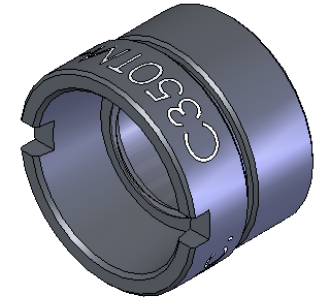
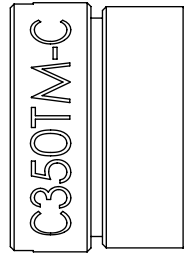


REV. #	DESCRIPTION:	NAME/DATE:



SPECIFICATIONS:

EFFECTIVE FOCAL LENGTH = 4.50 mm
 NUMERICAL APERTURE = 0.42
 CLEAR APERTURE = 3.70 mm
 WORKING DISTANCE = 2.38 mm
 DESIGN WAVELENGTH = 980nm
 COATING = 1050 - 1600nm

THIS DRAWING IS FOR INFORMATION ONLY
 NOT INTENDED FOR MANUFACTURING

TOLERANCES

UNLESS OTHERWISE SPECIFIED:
DIMENSIONS ARE IN INCHES
LINEAR TOLERANCES:
 TWO PLACE DECIMAL: ±0.010
 THREE PLACE DECIMAL: ±0.005
 ANGULAR: ±30'
 SURFACE FINISH: 32 MICROINCHES
 PARALLELISM: 0.002
 FLATNESS: 0.002
 STRAIGHTNESS: 0.002
 CONCENTRICITY: 0.002
 PERPENDICULARITY: 0.002
 THREAD: CLASS 2 FIT

	NAME	DATE
DRAWN	DP	05/17/2007
ENG APPR.	KMS	05/17/2007
MFG APPR.	TO	05/17/2007

PROPRIETARY AND CONFIDENTIAL
 THE INFORMATION CONTAINED IN THIS DRAWING IS THE SOLE PROPERTY OF THORLABS, INC. ANY REPRODUCTION IN PART OR AS A WHOLE WITHOUT THE WRITTEN PERMISSION OF THORLABS, INC. IS PROHIBITED.

THORLABS INC. PO BOX 366
 NEWTON NJ

TITLE: C COATED MOUNTED ASPHERIC
 LENS f = 4.50 mm NA = 0.42

MATERIAL: 303 STAINLESS STEEL AND C0550 GLASS
 SIZE REV. A A

SCALE: 4:1 SHEET 1 OF 1

DWG. NO. 1397-E01
 PART NO. C350TM-C