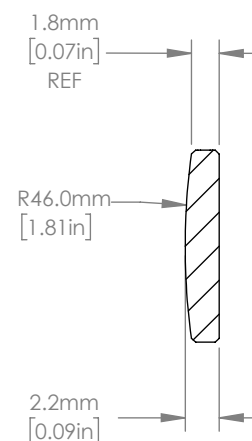
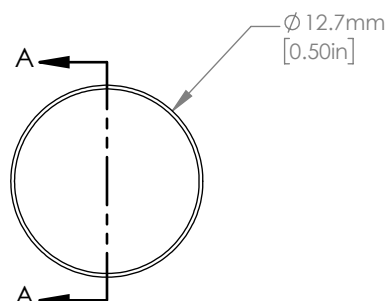


ISOMETRIC VIEW
SCALE: 2:1




SECTION A-A

NOTES/SPECIFICATIONS:

1. DESIGN WAVELENGTH: 587.6 nm
2. FOCAL LENGTH: $f=100.3\text{ mm} \pm 1\%$
3. BACK FOCAL LENGTH(REF): $bf=98.8\text{ mm}$
4. CLEAR APERTURE: $> \varnothing 11.43\text{ mm}$
5. SURFACE QUALITY: 20-10 SCRATCH-DIG
6. CENTRATION: $< 3\text{ arcmin}$
7. DIAMETER TOLERANCE: $+0.0/-0.1\text{ mm}$
8. THICKNESS TOLERANCE: $\pm 0.1\text{ mm}$
9. COATING: VAR R<0.25% PER SURFACE FOR 633 nm

FOR INFORMATION ONLY
NOT FOR MANUFACTURING PURPOSES

DRAWING PROJECTION			 www.thorlabs.com	
	NAME	DATE		
DRAWN	YB	26/NOV/19	$\varnothing 12.7\text{ mm } f=100\text{ mm}$ FUSED SILICA PLANO CONVEX LENS, -633 nm COAT	
APPROVAL	ST	11/DEC/19		
COPYRIGHT © 2019 BY THORLABS			MATERIAL	REV
VALUES IN PARENTHESIS ARE CALCULATED AND MAY CONTAIN ROUND OFF ERRORS			UV FUSED SILICA	
			ITEM #	APPROX WEIGHT
			LA4600-633	0.56 g