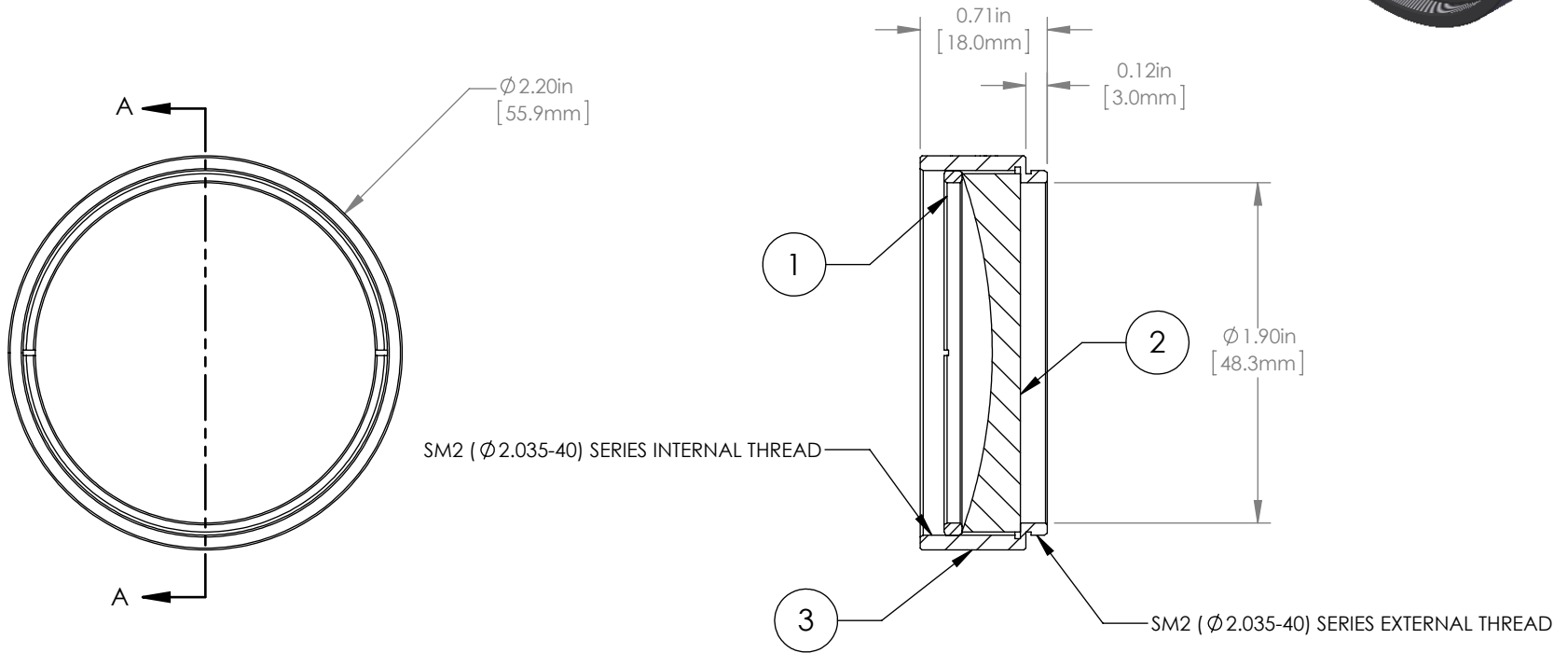
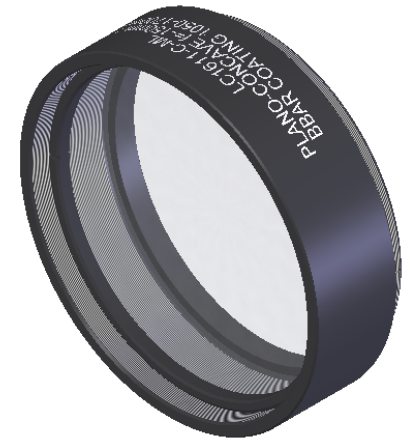


	PART DESCRIPTION	MATERIAL
①	SM2RR	ANODIZED ALUMINUM
②	LC1611-C	N-BK7
③	ENGRAVED HOUSING	ANODIZED ALUMINUM



NOTES/SPECIFICATIONS:

1. DESIGN WAVELENGTH: 633nm
2. FOCAL LENGTH:  $f = -149.9\text{mm} \pm 1\%$
3. WORKING DISTANCE (REF):  $-135.7\text{mm}$
4. CLEAR APERTURE:  $> \text{Ø } 45.72\text{mm}$
5. SURFACE QUALITY: 40-20 SCRATCH-DIG
6. COATING: BBAR  $R_{\text{avg}} < 0.5\%$  FROM 1050-1700nm, AOI: 0°, ON OUTER OPTICAL SURFACES

FOR INFORMATION ONLY  
NOT FOR MANUFACTURING PURPOSES

DRAWING PROJECTION			 <a href="http://www.thorlabs.com">www.thorlabs.com</a> <b>Ø 2" MOUNTED PLANO-CONCAVE LENS, <math>f = -150\text{mm}</math>, -C COAT</b>	
NAME	DATE			
DRAWN	GG	20/NOV/15	MATERIAL	
APPROVAL	DD	20/NOV/15		
COPYRIGHT © 2015 BY THORLABS <small>VALUES IN PARENTHESIS ARE CALCULATED AND MAY CONTAIN ROUND OFF ERRORS</small>			SEE TABLE	REV A
			ITEM #	APPROX WEIGHT
			LC1611-C-ML	58 g