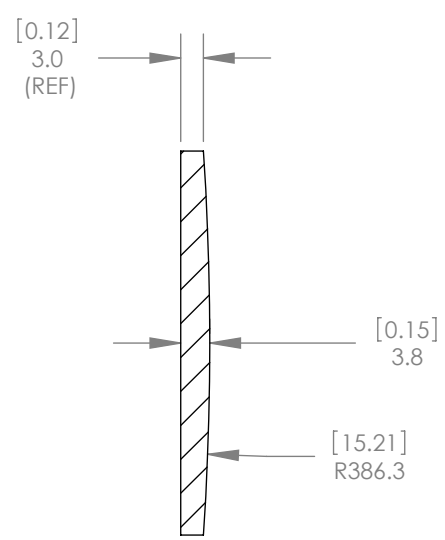
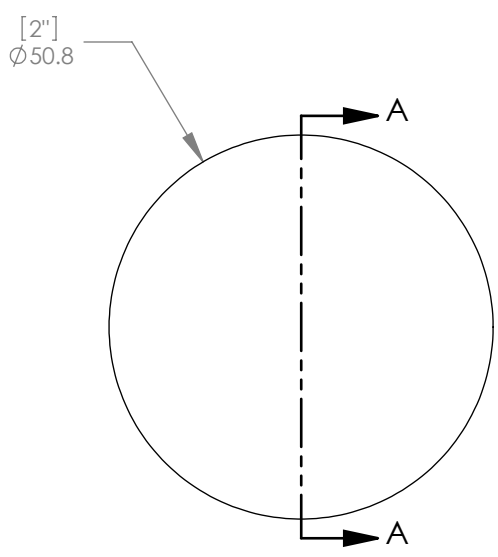




1:2 ISOMETRIC VIEW FOR REFERENCE ONLY



SECTION A-A

NOTES/SPECIFICATIONS:

1. DESIGN WAVELENGTH: 587.6nm
2. FOCAL LENGTH:  $f=747.5\text{mm} \pm 1\%$
3. BACK FOCAL LENGTH(REF):  $bf=745.0\text{mm}$
4. CLEAR APERTURE:  $>90\%$
5. SURFACE QUALITY: 40-20 SCRATCH-DIG
6. CENTRATION:  $<3\text{arcmin}$
7. DIAMETER TOLERANCE:  $+0.0/-0.1\text{mm}$
8. THICKNESS TOLERANCE:  $\pm 0.1\text{mm}$
9. COATING: BBAR  $R_{avg} < 0.5\%$  FROM 350nm-700nm,  $0^\circ$  AOI, ON OUTER OPTICAL SURFACES

ALL DIMENSIONS ARE IN THE FORM [in] mm:  
 THIS DRAWING IS FOR INFORMATION ONLY  
 NOT INTENDED FOR MANUFACTURING

**THORLABS INC.** PO BOX 366  
 NEWTON NJ

TITLE: D=50.8 F=750.0 N-BK7 A  
 COAT PLANO CONVEX LENS

MATERIAL: N-BK7 SIZE A REV. B

SCALE: 1:1 SHEET 1 OF 1

DWG. NO. 4463-E01 PART NO. LA1727-A

|           | NAME | DATE       |
|-----------|------|------------|
| DRAWN     | WD   | 11/19/2009 |
| ENG APPR. | BW   | 11/24/2009 |
| MFG APPR. | DD   | 12/09/2009 |

**PROPRIETARY AND CONFIDENTIAL**  
 THE INFORMATION CONTAINED IN THIS DRAWING IS THE SOLE PROPERTY OF THORLABS, INC. ANY REPRODUCTION IN PART OR AS A WHOLE WITHOUT THE WRITTEN PERMISSION OF THORLABS, INC. IS PROHIBITED.