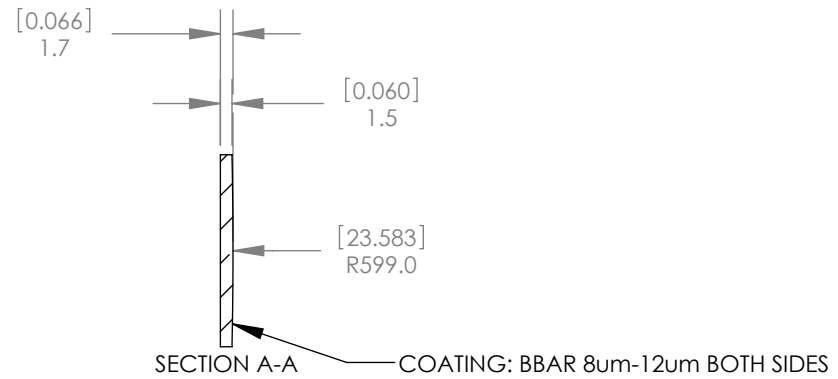
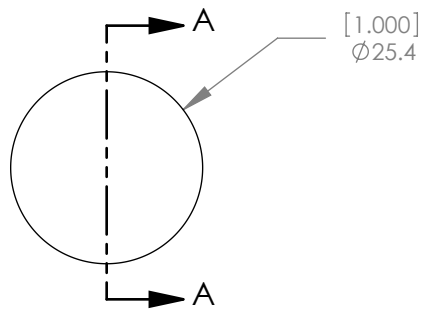


REV. #	DESCRIPTION:	NAME/DATE:



FOCAL LENGTH: f=200.0mm
 BACK FOCAL LENGTH: 198.88mm
 INDEX: n= 3.46222
 DESIGN WAVELENGTH: 10.0um
 SCRATCH/DIG: 40/20
 DIMAETER TOLERANCE: +0.00mm/-0.10mm
 CLEAR APERTURE: >90%
 CENTRATION: 3 arcmin
 CENTER THICKNESS TOLERANCE: +/- .2mm

ALL DIMENSIONS IN
MILLIMETERS AND INCHES

FOR INFORMATION ONLY
NOT FOR MANUFACTURE

THORLABS INC. PO BOX 366
NEWTON NJ

TOLERANCES	NAME	DATE
UNLESS OTHERWISE SPECIFIED:	DRAWN TO	4/26/2006
DIMENSIONS ARE IN INCHES	ENG APPR. TO	4/26/2006
LINEAR TOLERANCES:	MFG APPR. TO	4/26/2006
TWO PLACE DECIMAL: ±0.010	PROPRIETARY AND CONFIDENTIAL	
THREE PLACE DECIMAL: ±0.005	THE INFORMATION CONTAINED IN THIS	
ANGULAR: ±30'	DRAWING IS THE SOLE PROPERTY OF	
SURFACE FINISH: 32 MICROINCHES	THORLABS, INC. ANY REPRODUCTION	
PARALLELISM: 0.002	IN PART OR AS A WHOLE WITHOUT	
FLATNESS: 0.002	THE WRITTEN PERMISSION OF	
STRAIGHTNESS: 0.002	THORLABS, INC. IS PROHIBITED.	
CONCENTRICITY: 0.002		
PERPENDICULARITY: 0.002		
THREAD: CLASS 2 FIT		

TITLE: PLANO CONVEX LENS f=200.0mm d=25.4mm		
MATERIAL: Germanium	SIZE A	REV. A
SCALE: 1:1		SHEET 1 OF 1
DWG. NO. 13591-E01	PART NO. LA9200	