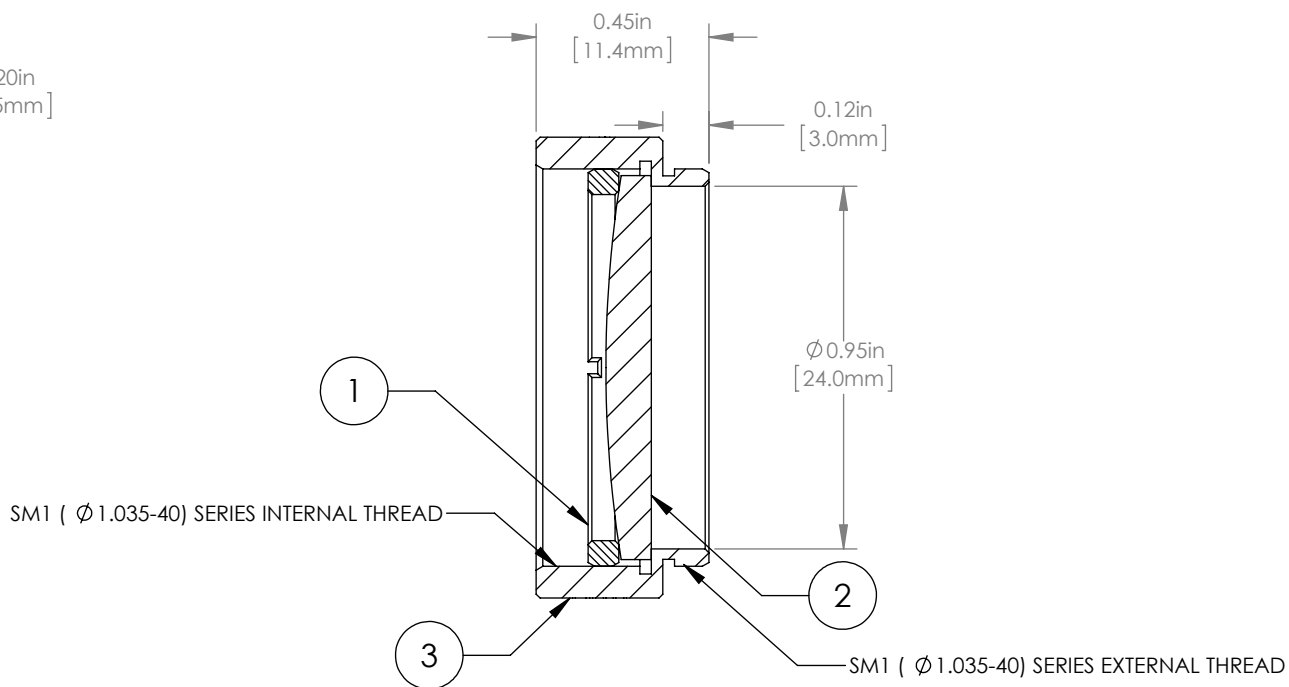
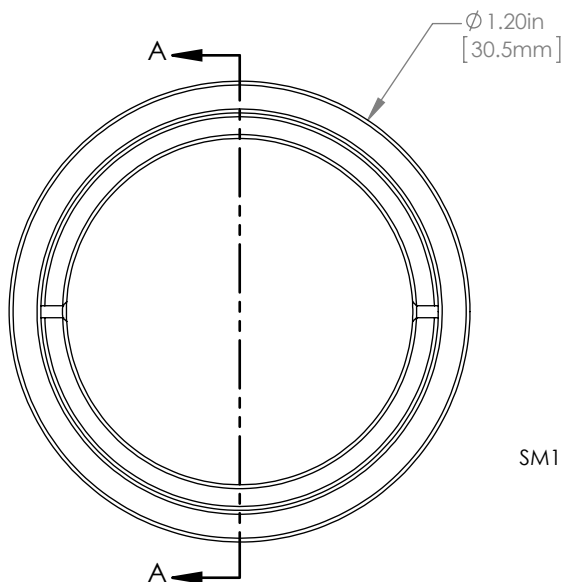


	PART DESCRIPTION	MATERIAL
①	SM1RR	ANODIZED ALUMINUM
②	LA4924	UV FUSED SILICA
③	ENGRAVED HOUSING	ANODIZED ALUMINUM



NOTES/SPECIFICATIONS:

1. DESIGN WAVELENGTH: 546nm
2. FOCAL LENGTH:  $f=175.0\text{mm} \pm 1\%$
3. WORKING DISTANCE (REF): 169.1mm
4. CLEAR APERTURE:  $> \text{Ø} 22.86\text{mm}$
5. SURFACE QUALITY: 40-20 SCRATCH-DIG

FOR INFORMATION ONLY  
NOT FOR MANUFACTURING PURPOSES

DRAWING PROJECTION					
	NAME		DATE	<b>THORLABS</b> www.thorlabs.com Ø 1" MOUNTED PLANO-CONVEX LENS, $f=150\text{mm}$	
DRAWN	GG		13/OCT/15		
APPROVAL	DD		13/OCT/15		
<b>COPYRIGHT © 2015 BY THORLABS</b>				MATERIAL	SEE TABLE
VALUES IN PARENTHESIS ARE CALCULATED AND MAY CONTAIN ROUND OFF ERRORS				ITEM #	APPROX WEIGHT
				LA4924-ML	8 g

REV  
A