

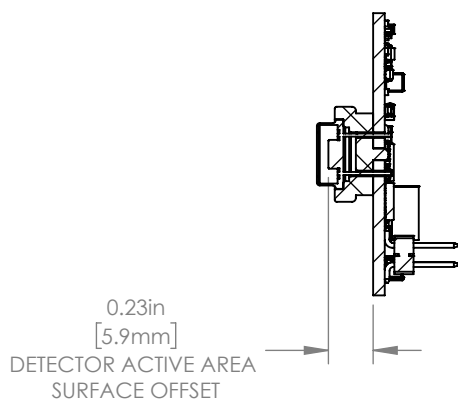
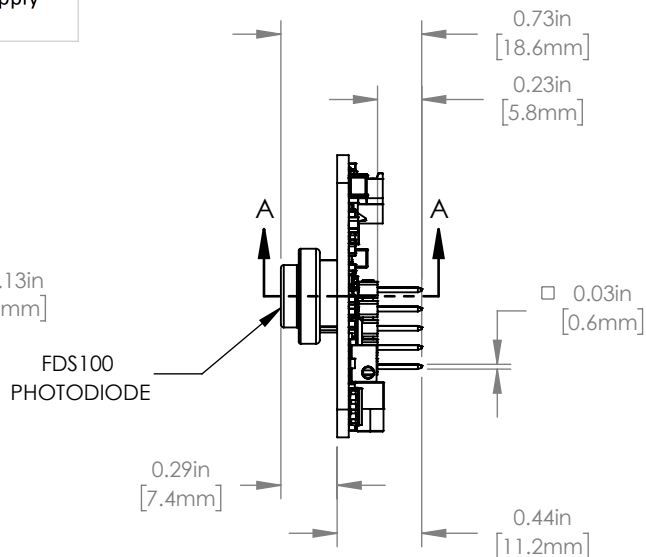
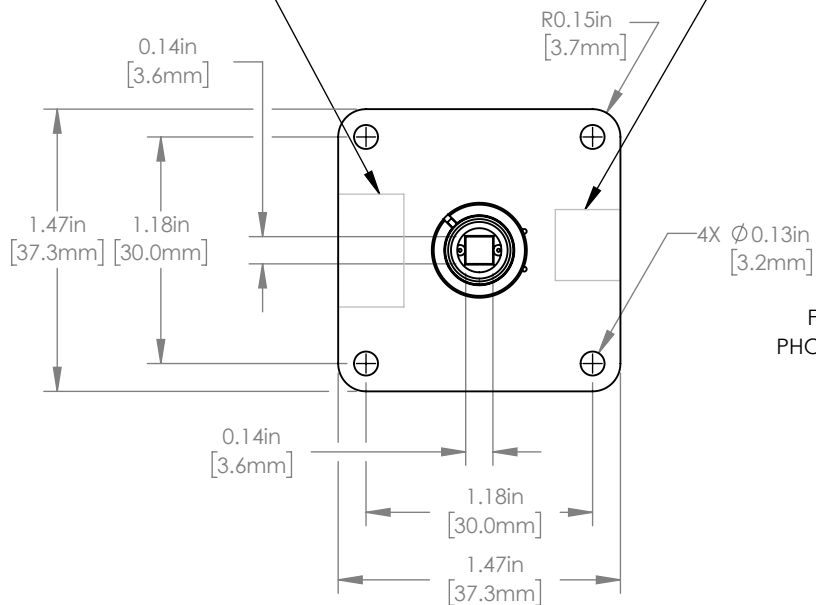
Gain Switch Table			
A2	A1	A0	Gain
0	0	0	0 dB
0	0	1	10 dB
0	1	0	20 dB
0	1	1	30 dB
1	0	0	40 dB
1	0	1	50 dB
1	1	0	60 dB
1	1	1	70 dB

J2 Pin Out			
Pin	Designation	Pin	Designation
1	+V	2	GND
3	GND	4	OUTPUT
5	-V	6	N.C.
7	A2	8	A1
9	A0	10	N.C.

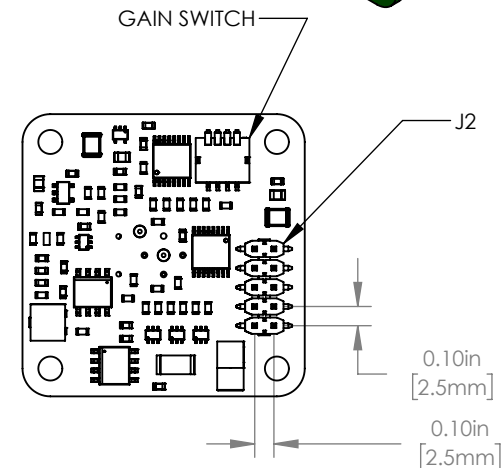
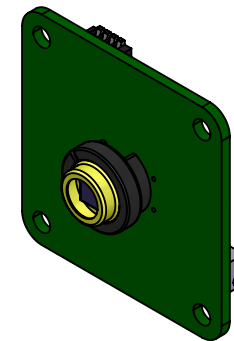
Note:

Pin 7,8,9: A0-A2 is referring to the three digital pins for the gain adjustment.


Pin 1,5:  $\pm V$  is referring to the power supply positive/negative voltages.



SECTION A-A  
SCALE 1 : 1



FOR INFORMATION ONLY  
NOT FOR MANUFACTURING PURPOSES

DRAWING PROJECTION			 www.thorlabs.com	
	NAME	DATE		
DRAWN	TA	04/APR/21	OEM Si Adjustable Gain Detector	
APPROVAL	YM	04/APR/21	MATERIAL	REV A
COPYRIGHT © 2021 BY THORLABS			N/A	
VALUES IN PARENTHESIS ARE CALCULATED AND MAY CONTAIN ROUND OFF ERRORS			ITEM #	APPROX WEIGHT
			PDAPC1	8 g