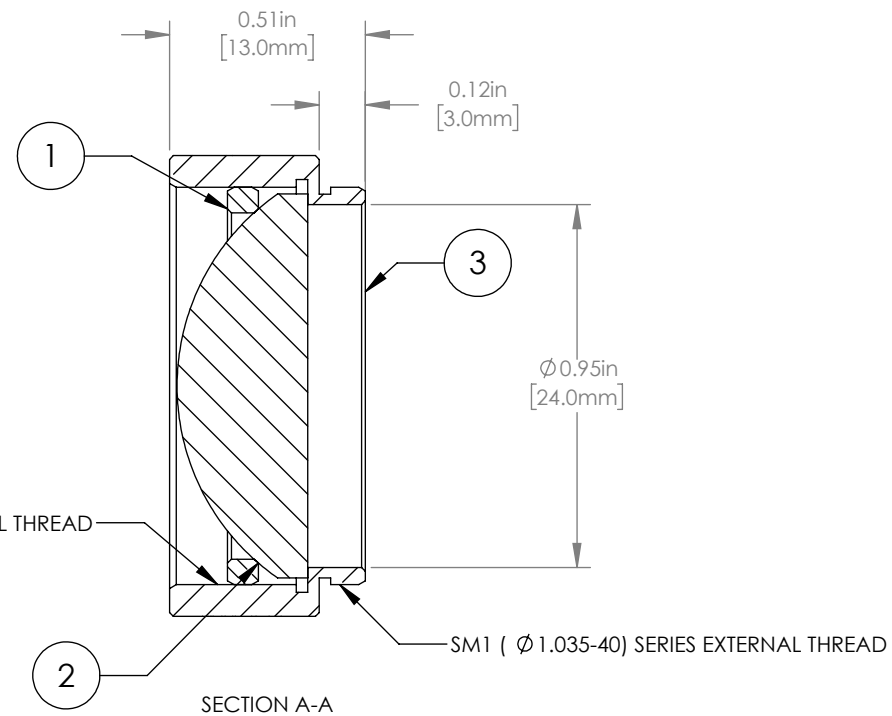
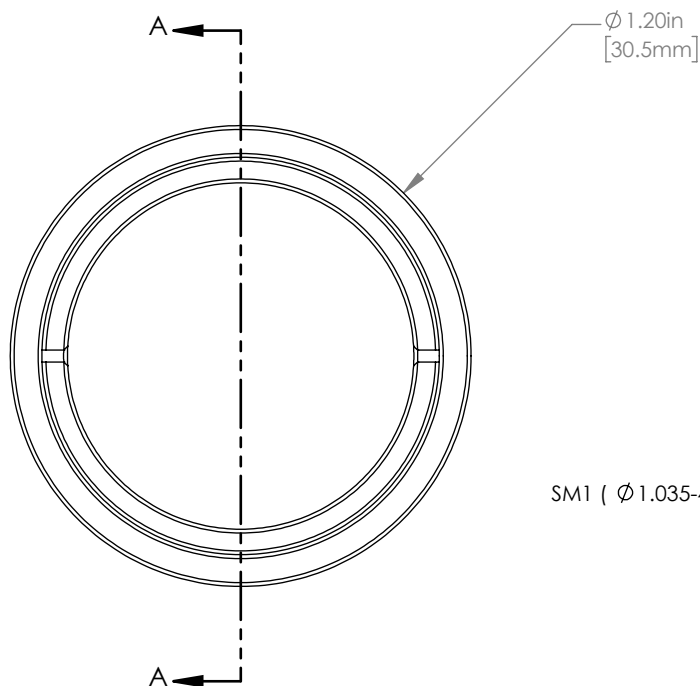


|   | PART DESCRIPTION | MATERIAL          |
|---|------------------|-------------------|
| ① | SM1RR            | ANODIZED ALUMINUM |
| ② | LA1805-B         | N-BK7             |
| ③ | ENGRAVED HOUSING | ANODIZED ALUMINUM |



NOTES/SPECIFICATIONS:

- DESIGN WAVELENGTH: 587.6 nm
- FOCAL LENGTH:  $f=29.9\text{ mm} \pm 1\%$
- WORKING DISTANCE (REF): 20.4 mm
- CLEAR APERTURE:  $\phi 22.9\text{ mm}$
- SURFACE QUALITY: 40-20 SCRATCH-DIG
- COATING: BBAR  $<0.5\%$  FROM 650 nm-1050 nm,  $0^\circ$  AOI, ON BOTH OPTICAL SURFACES

FOR INFORMATION ONLY  
NOT FOR MANUFACTURING PURPOSES

| DRAWING PROJECTION  |      |  |           |             |  | <b>THORLABS</b><br>www.thorlabs.com<br>MOUNTED $\phi 1''$ $f=30\text{ mm}$<br>PLANO CONVEX LENS, -B COATED |  |
|---|------|--|-----------|-------------|--|--|--|
|   | NAME |  | DATE      | MATERIAL    |  | REV  |  |
| DRAWN   | GG   |  | 20/JAN/20 | SEE TABLE   |  | A  |  |
| APPROVAL  | DD   |  | 20/JAN/20 | ITEM #      |  | APPROX WEIGHT  |  |
| <small>COPYRIGHT © 2020 BY THORLABS</small><br><small>VALUES IN PARENTHESIS ARE CALCULATED AND MAY CONTAIN ROUND OFF ERRORS</small> |      |  |           | LA1805-B-ML |  | 14 g   |  |