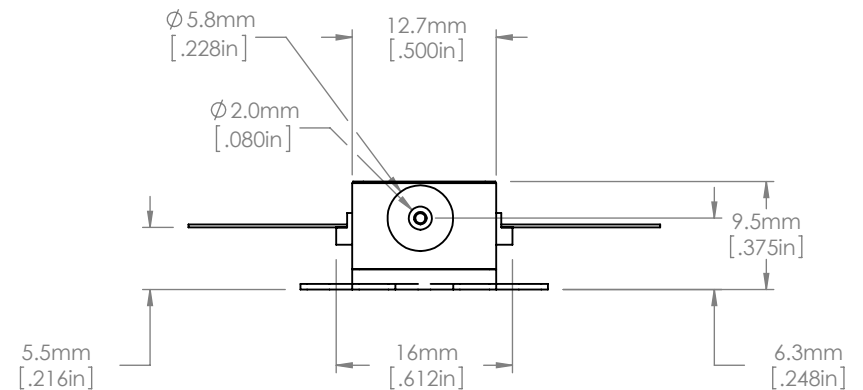
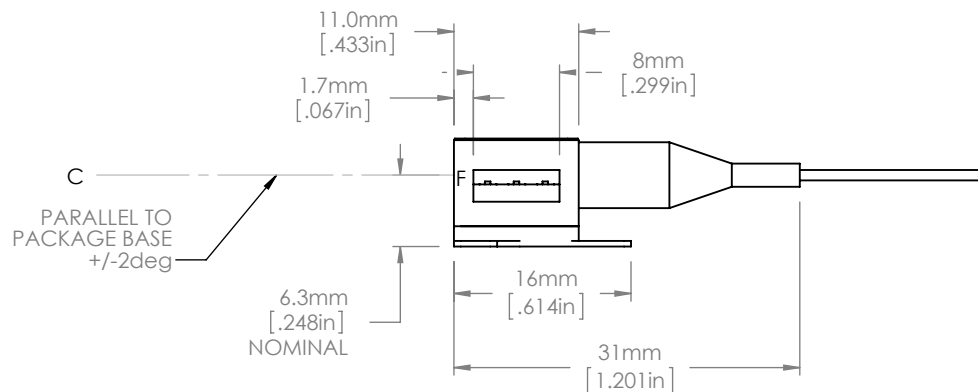


PIN IDENTIFICATION

1. TEC +
2. Thermistor
3. Thermistor
4. Dev Anode
5. Dev Cathode
6. TEC -



NOTES :

1. F DENOTES EMISSION POINT FROM CHIP FACET (NOMINALLY 0.2mm INSIDE PACKAGE WALL)
C DENOTES CENTRAL AXIS FOR EMERGENT BEAM.
2. THE DEVICE IS PROVIDED WITH A FIBER TAIL OF 1000mm MINIMUM LENGTH AND TERMINATED IN AN FC/APC CONNECTOR; THE FIBER IS CORNING SMF28E TYPE.

FOR INFORMATION ONLY
NOT FOR MANUFACTURING PURPOSES

DRAWING PROJECTION			THORLABS www.thorlabs.com	
NAME	DATE			
DRAWN	AD	17/DEC/13	SAF GAIN CHIP ASSEMBLY (1450nm)	
APPROVAL	JW	17/DEC/13	MATERIAL	N/A
COPYRIGHT © 2013 BY THORLABS				
VALUES IN PARENTHESIS ARE CALCULATED AND MAY CONTAIN ROUND OFF ERRORS			ITEM #	SAF1450S2
			APPROX WEIGHT	0.018 kg