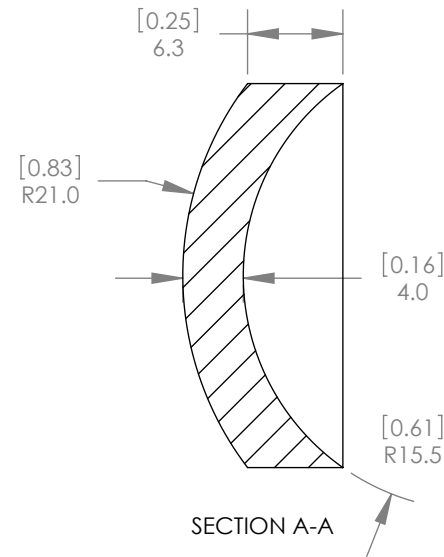
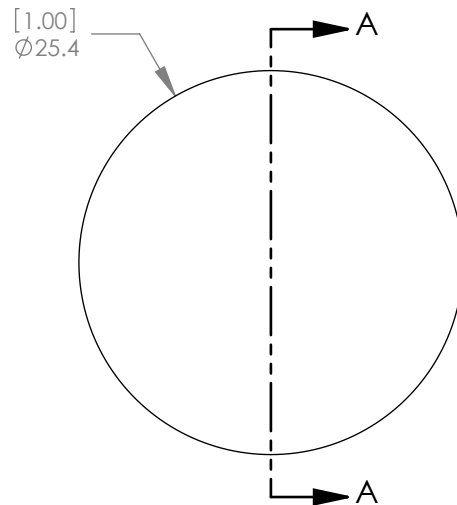


1:1 ISOMETRIC VIEW FOR REFERENCE ONLY



NOTES/SPECIFICATIONS:

DESIGN WAVELENGTH: 10.6µm
 FOCAL LENGTH: -75.00mm ± 1%
 BACK FOCAL LENGTH (REF): -66.65mm
 CLEAR APERTURE: >80%
 SURFACE QUALITY: 60-40 SCRATCH-DIG
 CENTRATION: <3 arcmin
 DIAMETER TOLERANCE: +0.0/-0.1mm
 THICKNESS TOLERANCE: ± 0.1mm
 COATING: BBAR Ravg <1.5% FROM 8µm-12µm,
 0° AOI, ON BOTH OPTICAL SURFACES

ALL DIMENSIONS ARE IN THE FORM $\frac{[in]}{mm}$.
 THIS DRAWING IS FOR INFORMATION ONLY
 NOT INTENDED FOR MANUFACTURING

	NAME	DATE
DRAWN	WD	8/27/2009
ENG APPR.	BW	9/03/2009
MFG APPR.	PM	9/08/2009

PROPRIETARY AND CONFIDENTIAL

THE INFORMATION CONTAINED IN THIS DRAWING IS THE SOLE PROPERTY OF THORLABS, INC. ANY REPRODUCTION IN PART OR AS A WHOLE WITHOUT THE WRITTEN PERMISSION OF THORLABS, INC. IS PROHIBITED.

THORLABS INC. PO BOX 366
 NEWTON NJ

TITLE: f = -75.00 mm, Ø1" ZnSe, - Meniscus Lens,
 BBAR: 8-12µm

MATERIAL: ZINC SELENIDE CVD (LASER GRADE) SIZE A REV. A

SCALE: 2:1 SHEET 1 OF 1

DWG. NO. 20227-E01 PART NO. LF7053-F