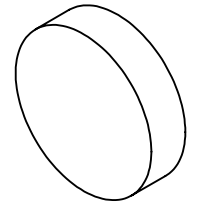


NOTES:

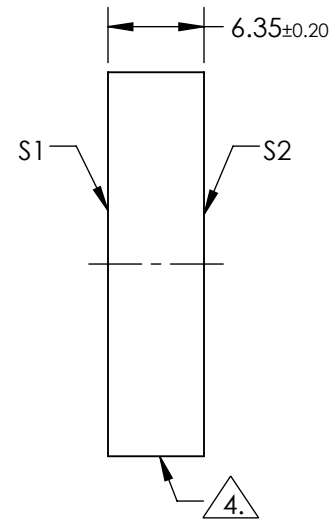
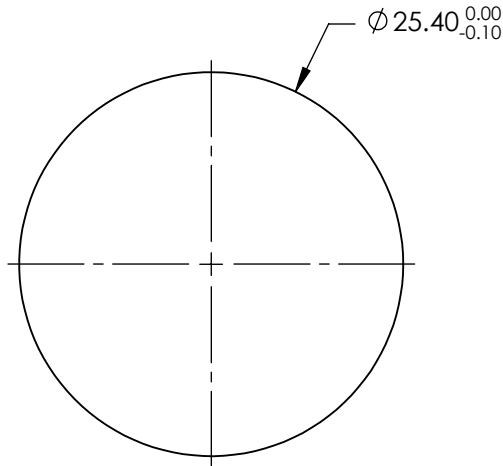
**FOR INFORMATION ONLY:  
DO NOT MANUFACTURE  
PARTS TO THIS DRAWING**



1. SUBSTRATE: FUSED SILICA
2. SURFACE S2 TO BE PARALLEL WITH SURFACE S1 TO WITHIN <3 ARCMIN
3. COATING (APPLY ACROSS COATING APERTURE):  
 S1: R(ABS) > 99% @ 532nm  
 T(ABS) > 95% @ 1064nm @ 45° AOI  
  
 DAMAGE THRESHOLD (PULSED):  
 7.5 J/cm<sup>2</sup> @ 20ns , 20 Hz @ 532nm  
 7.5 J/cm<sup>2</sup> @ 20ns , 20 Hz @ 1064nm  
  
 S2: R(ABS) < 0.25% @ 1064nm @ 45° AOI  
  
 DAMAGE THRESHOLD (PULSED):  
 15 J/cm<sup>2</sup> @ 20ns , 20 Hz @ 1064nm

4. FINE GRIND SURFACE

5. ROHS COMPLIANT

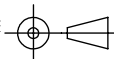


SPECIFICATIONS SUBJECT TO CHANGE WITHOUT NOTICE  
DIMENSIONS ARE FOR REFERENCE ONLY



	S1	S2
SHAPE	PLANO	PLANO
SURFACE QUALITY	10-5	10-5
CLEAR APERTURE	Ø21.59	Ø21.59
BEVEL	PROTECTIVE AS NEEDED	PROTECTIVE AS NEEDED

THIRD ANGLE PROJECTION



ALL DIMS IN

mm

TITLE

Ø25.4mm HS 532R/1064T HARMONIC BEAMSPLITTER

DWG NO

37715

SHEET 1 OF 1