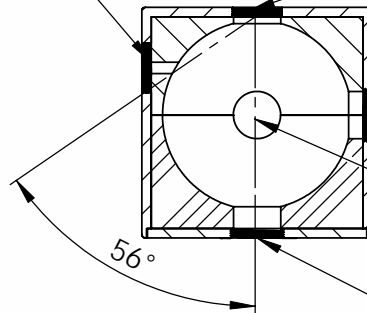


INFORMATION ONLY, NOT FOR MANUFACTURING

Ø 3MM DETECTOR PORT
WITH SM05 MOUNTING THREAD

0° 12.5MM ENTRANCE PORT



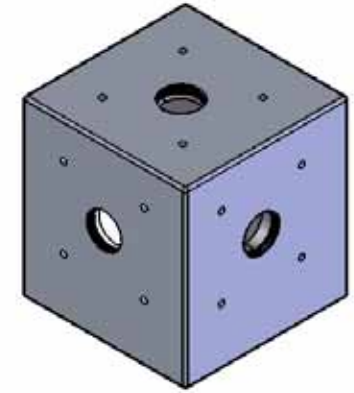
90° 12.5MM PORT
WITH SM05 MOUNTING THREAD

North Pole 12.5MM PORT
WITH SM05 MOUNTING THREAD

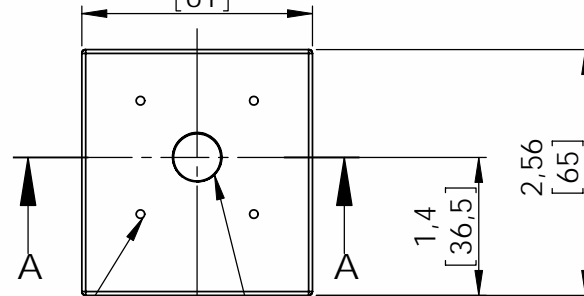
56°

SECTION A-A

180° 12.5MM PORT
WITH SM05 MOUNTING THREAD

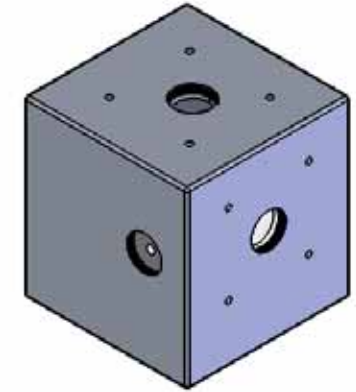


2,40
[61]



4 x 4-40 THREADS FOR
30MM CAGE SYSTEM

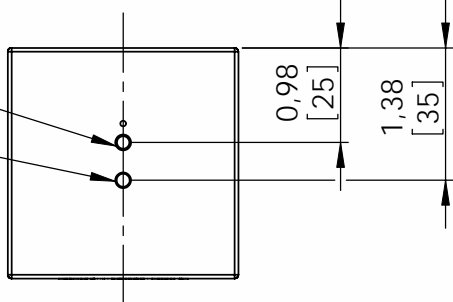
SM05 MOUNTING THREAD



ALL DIMENSIONS IN PARANTHESES ARE MILLIMETERS

M4

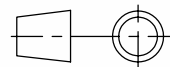
8-32



BOTTOM VIEW
MOUNTING THREADS

UNLESS OTHERWISE SPECIFIED:
DIMENSIONS ARE IN INCHES
TOLERANCES LINEAR: ±0.005
ANGULAR: ±30'

DEBUR AND
BREAK SHARP
EDGES



THORLABS Karlsfeld
Germany

	NAME	DATE
DRAWN	Go	08/24/07
CHK'D	Go	08/24/07
APPV'D	Go	08/24/07

MATERIAL:
N/A

TITLE:
GENERAL PURPOSE 2 INCH
INTEGRATING SPHERE

NO PART OF THIS DRAWING MAY BE
REPRODUCED OR TRANSMITTED IN ANY
FORM OR BY ANY MEANS INCLUDING
PHOTOCOPYING OR RECORDING
WITHOUT THE PRIOR WRITTEN
PERMISSION OF THORLABS GMBH

FINISH / TREATMENT:
N/A

PART NO.
IS200-4, IS236A-4

REV
A

DWG NO. 17553-E01

SIZE
A4

© THORLABS GMBH

DO NOT SCALE DRAWING

SCALE: 1:2

SHEET 1 OF 1