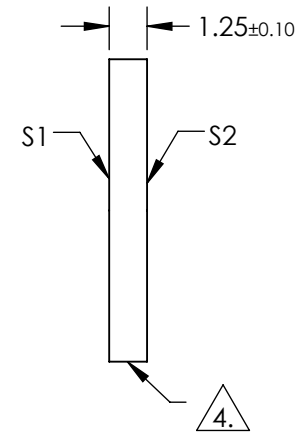
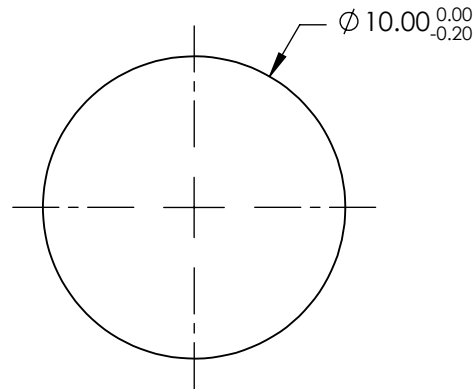
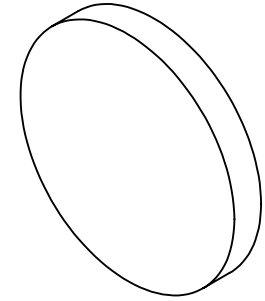


NOTES:

1. SUBSTRATE: UV GRADE FUSED SILICA
2. COATING (APPLY ACROSS CLEAR APERTURE)  
S1 & S2: RAVG  $\leq 0.5\%$  @ 600 - 1050nm
3. SURFACE S2 TO BE PARALLEL WITH S1 TO  $< 5$  ARCSEC

4. FINE GRIND SURFACE

5. RoHS COMPLIANT



**FOR INFORMATION ONLY:  
DO NOT MANUFACTURE  
PARTS TO THIS DRAWING**

SPECIFICATIONS SUBJECT TO CHANGE WITHOUT NOTICE  
DIMENSIONS ARE FOR REFERENCE ONLY

**EO**® Edmund Optics®

|                 | S1                   | S2                   |
|-----------------|----------------------|----------------------|
| SHAPE           | PLANO                | PLANO                |
| SURFACE QUALITY | 20-10                | 20-10                |
| CLEAR APERTURE  | $\varnothing 8.00$   | $\varnothing 8.00$   |
| BEVEL           | PROTECTIVE AS NEEDED | PROTECTIVE AS NEEDED |

THIRD ANGLE PROJECTION

ALL DIMS IN mm

|        |  |              |
|--------|--|--------------|
| TITLE  | 10mm DIA., 1.25mm THICK, NIR I COATED $\lambda/10$ FUSED SILICA WINDOW |              |
| DWG NO | 84460  | SHEET 1 OF 1 |