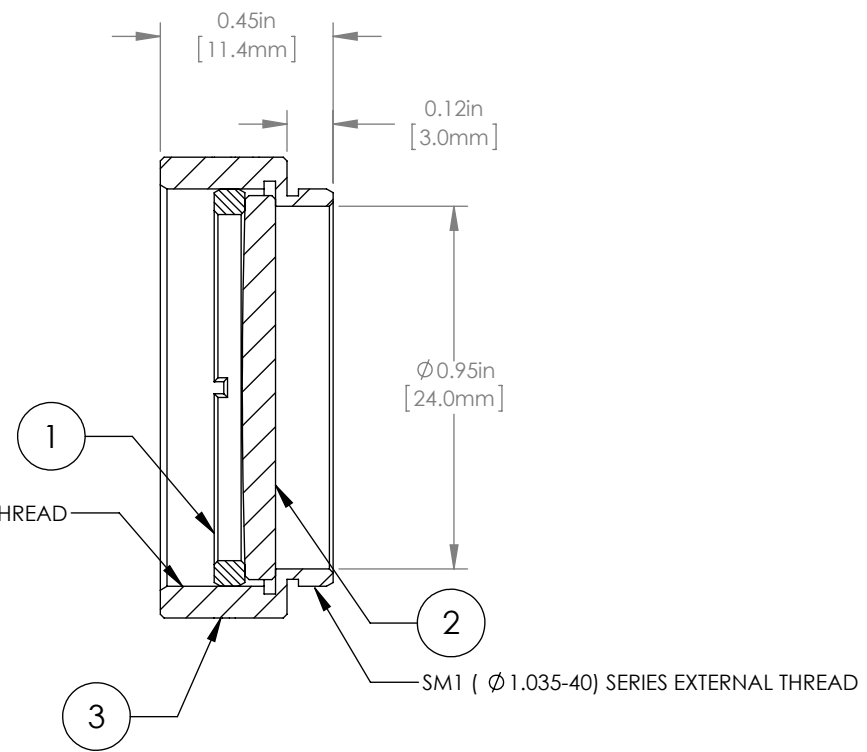
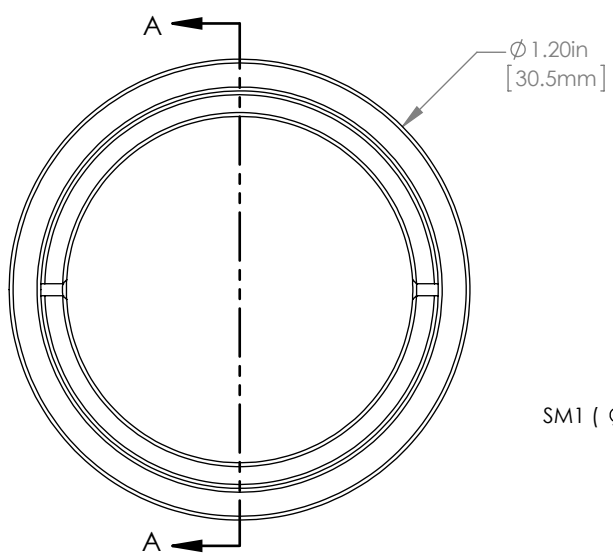


	PART DESCRIPTION	MATERIAL
①	SM1RR	ANODIZED ALUMINUM
②	LA4663-UV	UV FUSED SILICA
③	ENGRAVED HOUSING	ANODIZED ALUMINUM



NOTES/SPECIFICATIONS:

1. DESIGN WAVELENGTH: 546nm
2. FOCAL LENGTH: f=1000.0mm±1%
3. WORKING DISTANCE (REF): 994.7mm
4. CLEAR APERTURE: > Ø 22.86mm
5. SURFACE QUALITY: 40-20 SCRATCH-DIG
6. COATING: BBAR Ravg<0.5% FROM 245-400nm, AOI: 0°, ON OUTER OPTICAL SURFACES

FOR INFORMATION ONLY
NOT FOR MANUFACTURING PURPOSES

DRAWING PROJECTION		
NAME	DATE	
DRAWN GG	13/OCT/15	
APPROVAL DD	13/OCT/15	
COPYRIGHT © 2015 BY THORLABS		
VALUES IN PARENTHESIS ARE CALCULATED AND MAY CONTAIN ROUND OFF ERRORS		

THORLABS www.thorlabs.com	
Ø 1" MOUNTED PLANO-CONVEX LENS, f=1000mm, -UV COAT	
MATERIAL	REV A
SEE TABLE	
ITEM # LA4663-UV-ML	APPROX WEIGHT 8 g