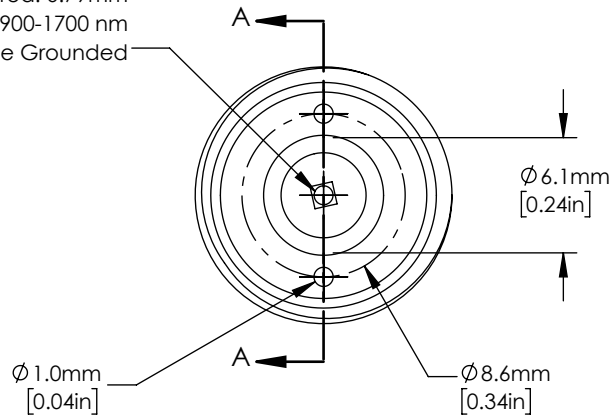
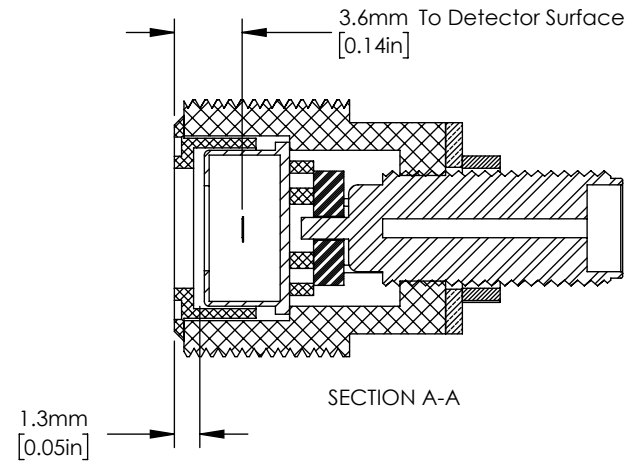


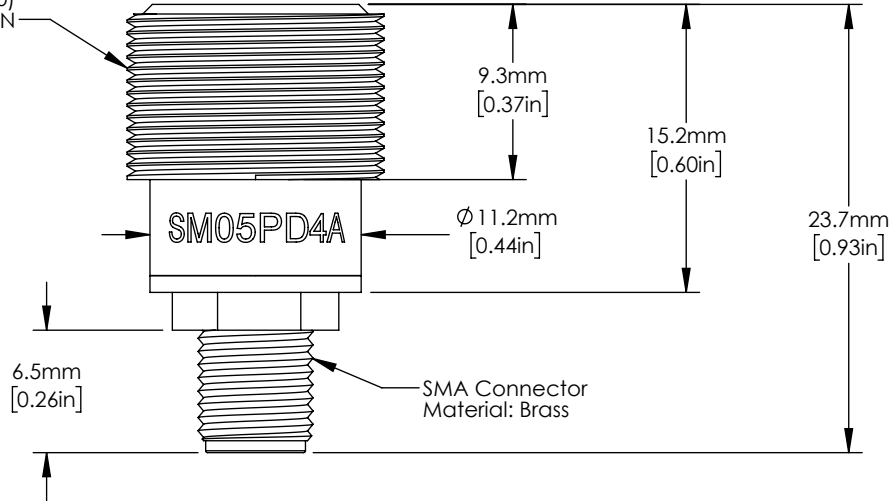
FGA10 InGaAs Photodiode  
 Active Area: 0.79mm<sup>2</sup>  
 Range: 900-1700 nm  
 Cathode Grounded



Use with Adjustable  
 Spanner Wrench



Housing  
 External Thread  
 SM05 (0.535-40)  
 Material: Black DELRIN



FOR INFORMATION ONLY  
 NOT FOR MANUFACTURING PURPOSES

DRAWING PROJECTION

	NAME	DATE
DRAWN	WKC	29/MAR/18
APPROVAL	EC	30/MAR/18

COPYRIGHT © 2018 BY THORLABS

VALUES IN PARENTHESIS ARE CALCULATED  
 AND MAY CONTAIN ROUND OFF ERRORS

**THORLABS**  
 www.thorlabs.com

SM05 Mounted InGaAs-Photodiode

MATERIAL See Drawing REV E

ITEM # SM05PD4A APPROX WEIGHT .005 kg