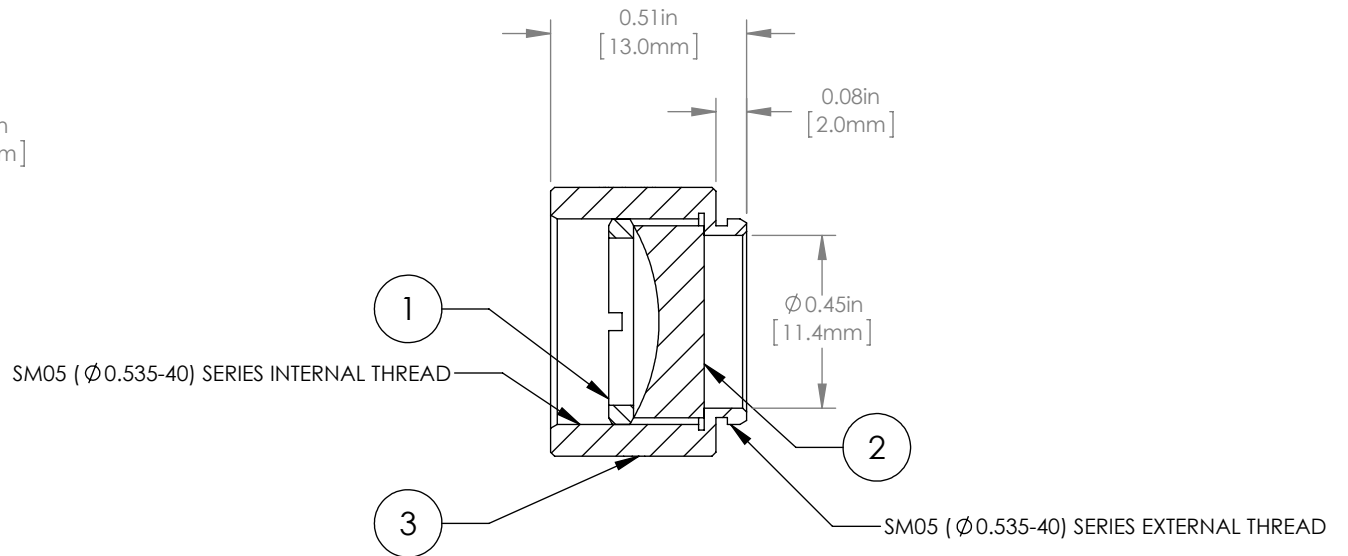
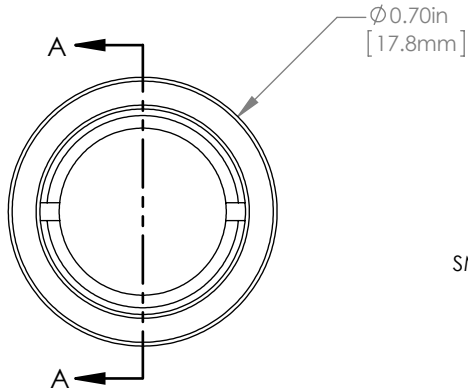
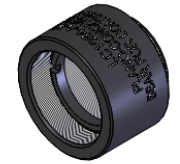


	PART DESCRIPTION	MATERIAL
①	SM05RR	ANODIZED ALUMINUM
②	LC1054-A	N-BK7
③	ENGRAVED HOUSING	ANODIZED ALUMINUM



NOTES/SPECIFICATIONS:

- DESIGN WAVELENGTH: 633nm
- FOCAL LENGTH:  $f=-25.0\text{mm} \pm 1\%$
- WORKING DISTANCE (REF):  $-16.7\text{mm}$
- CLEAR APERTURE:  $> \phi 11.0\text{mm}$
- SURFACE QUALITY: 40-20 SCRATCH-DIG
- COATING: BBAR  $R_{\text{avg}} < 0.5\%$  FROM 350-700nm, AOI:  $0^\circ$ , ON OUTER OPTICAL SURFACES

FOR INFORMATION ONLY  
NOT FOR MANUFACTURING PURPOSES

DRAWING PROJECTION						<b>THORLABS</b> www.thorlabs.com		
NAME	DATE	$\phi 1/2$ " MOUNTED PLANO-CONCAVE LENS, $f=-25\text{mm}$ , -A COAT				MATERIAL		
DRAWN	20/NOV/15					SEE TABLE		REV
APPROVAL	20/NOV/15					A		
COPYRIGHT © 2015 BY THORLABS						ITEM #	APPROX WEIGHT	
VALUES IN PARENTHESIS ARE CALCULATED AND MAY CONTAIN ROUND OFF ERRORS						LC1054-A-ML	5 g	