

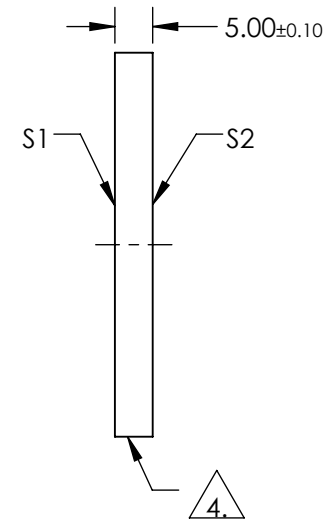
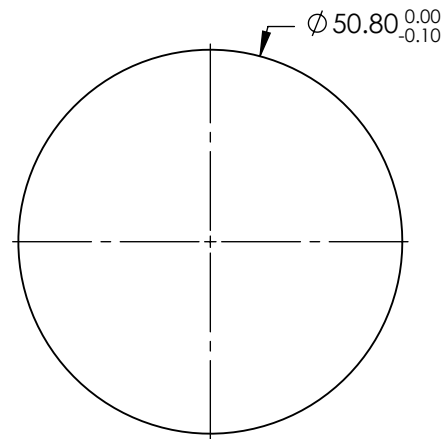
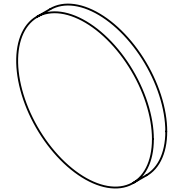
NOTES:

1. SUBSTRATE: ZnSe
2. SURFACE S2 TO BE PARALLEL TO SURFACE S1 TO WITHIN < 3 ARCMIN
3. COATING (APPLY ACROSS COATING APERTURE)

S1 & S2: HIGH- EFFICIENCY BROADBAND (BBAR)
 R(AVG) ≤ 0.5% FROM 8 - 12μm

4. FINE GRIND SURFACE

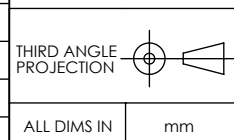
5. RoHS: COMPLIANT



**FOR INFORMATION ONLY:
 DO NOT MANUFACTURE
 PARTS TO THIS DRAWING**

SPECIFICATIONS SUBJECT TO CHANGE WITHOUT NOTICE
 DIMENSIONS ARE FOR REFERENCE ONLY

| | S1 | S2 |
|---------------------------|----------------------|----------------------|
| SHAPE | PLANO | PLANO |
| SURFACE QUALITY | 40-20 | 40-20 |
| SURFACE FLATNESS @ 10.6μm | λ/20 | λ/20 |
| CLEAR APERTURE | Ø45.72 | Ø45.72 |
| BEVEL | PROTECTIVE AS NEEDED | PROTECTIVE AS NEEDED |



EO® Edmund Optics®

| | | |
|--------|--|--------------|
| TITLE | 50.8mm DIA x 5mm THICK 8 - 12μm COATED ZnSe WINDOW | |
| DWG NO | 39467 | SHEET 1 OF 1 |