

NOTES:

1. SUBSTRATE:  
SAPPHIRE (AL<sub>2</sub>O<sub>3</sub>)
2. SURFACE S2 TO BE PARALLEL WITH SURFACE S1 TO WITHIN ≤ 3.5 ARCMIN
3. COATING (APPLY ACROSS CLEAR APERTURE)

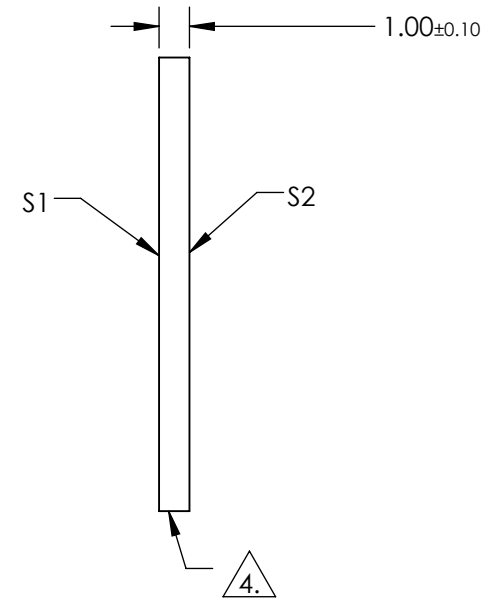
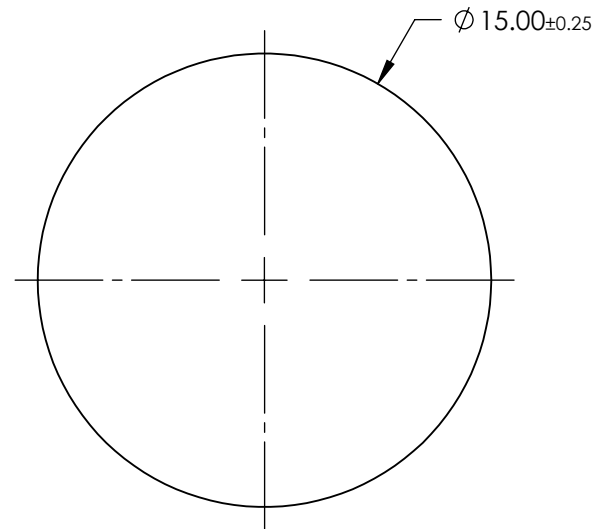
S1 & S2: R(AVG) <1.5% @ 2000-5000nm  
 R(ABS) <3.0% @ 2000-5000nm  
 R(AVG) <1.75% @ 2000-4000nm



FINE GRIND SURFACE

5. ROHS COMPLIANT

**FOR INFORMATION ONLY:  
 DO NOT MANUFACTURE  
 PARTS TO THIS DRAWING**



SPECIFICATIONS SUBJECT TO CHANGE WITHOUT NOTICE  
 DIMENSIONS ARE FOR REFERENCE ONLY

|   | S1                   | S2                   |
|---|----------------------|----------------------|
| SHAPE   | PLANO                | PLANO                |
| CLEAR APERTURE                                  | Ø13.50               | Ø13.50               |
| SURFACE FLATNESS                                | 2λ                   | 2λ                   |
| SURFACE QUALITY                                 | 80-50                | 80-50                |
| BIREFRINGENCE (n <sub>o</sub> -n <sub>e</sub> ) | 0.008                | 0.008                |
| BEVEL   | PROTECTIVE AS NEEDED | PROTECTIVE AS NEEDED |

THIRD ANGLE PROJECTION ALL DIMS IN mm

**EO**® **Edmund Optics**®

TITLE: 15mm Dia., 1mm Thick, BBAR (2000-5000nm) AR Coated Sapphire Window

DWG NO: 21021

SHEET 1 OF 1