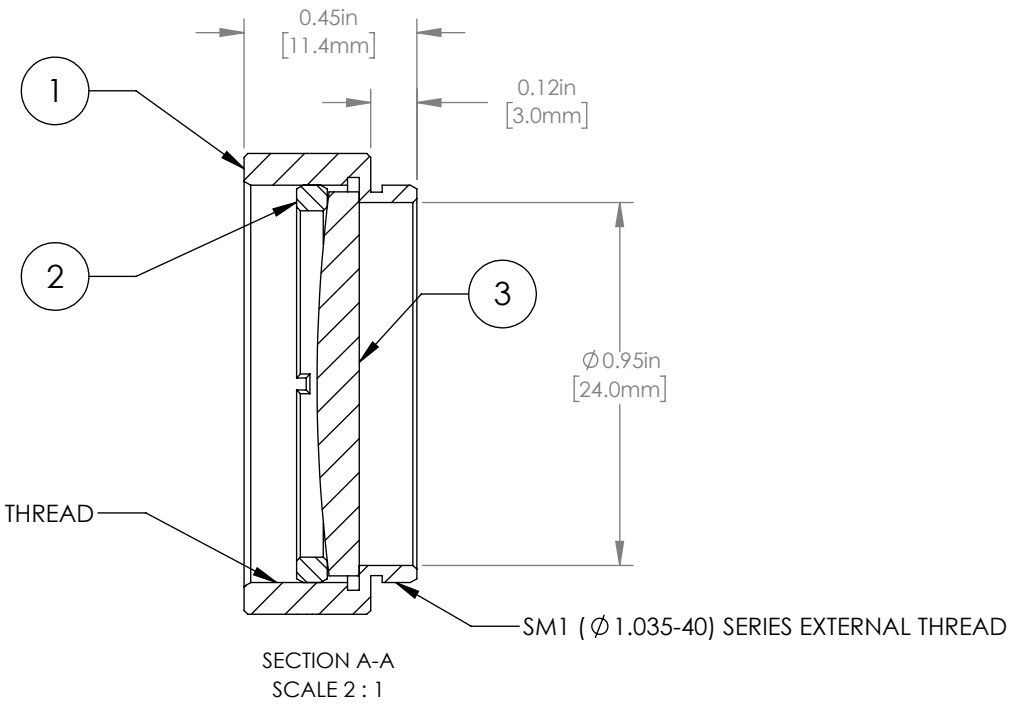
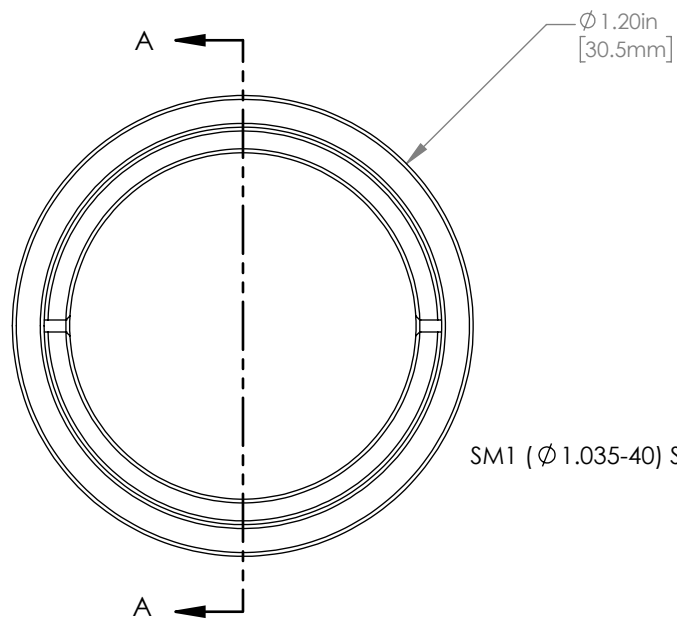


	PART DESCRIPTION	MATERIAL
①	ENGRAVED HOUSING	ANODIZED ALUMINUM
②	SM1RR	ANODIZED ALUMINUM
③	LA1708-A	N-BK7



NOTES/SPECIFICATIONS:

- DESIGN WAVELENGTH: 587.6 nm
- FOCAL LENGTH: $f=199.3\text{ mm} \pm 1\%$
- WORKING DISTANCE: 193.7 mm
- CLEAR APERTURE: $\phi 22.9\text{ mm}$
- SURFACE QUALITY: 40-20 SCRATCH-DIG
- COATING: BBAR 350-700 nm, $R_{\text{avg}} < 0.5\%$, 0° AOI

FOR INFORMATION ONLY
NOT FOR MANUFACTURING PURPOSES

DRAWING PROJECTION			 www.thorlabs.com MOUNTED $\phi 25.4\text{ mm}$, $f = 200.0\text{ mm}$ PLANO CONVEX LENS, A COATED	
NAME	DATE			
DRAWN	GG	22/AUG/19	MATERIAL	
APPROVAL	DD	22/AUG/19		
COPYRIGHT © 2019 BY THORLABS			SEE TABLE	
VALUES IN PARENTHESIS ARE CALCULATED AND MAY CONTAIN ROUND OFF ERRORS			ITEM #	APPROX WEIGHT
			LA1708-A-ML	9 g