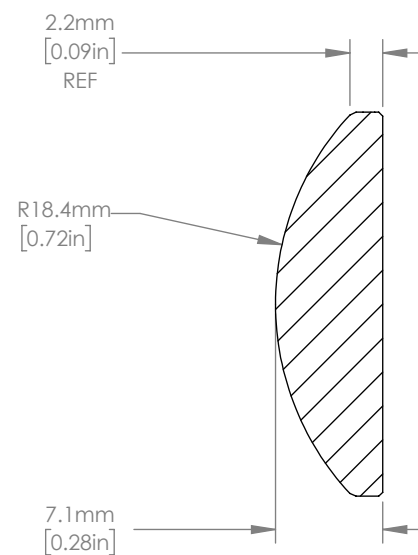
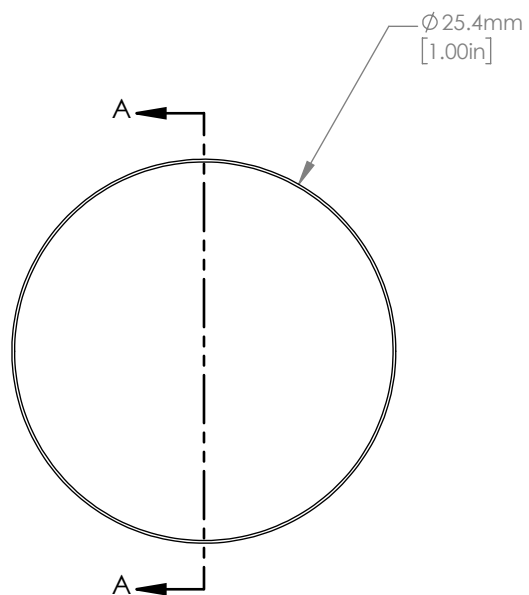


ISOMETRIC VIEW
SCALE: 2:1



SECTION A-A

NOTES/SPECIFICATIONS:

1. DESIGN WAVELENGTH: 587.6 nm
2. FOCAL LENGTH: $f=40.1 \text{ mm} \pm 1\%$
3. BACK FOCAL LENGTH(REF): $bf=35.3 \text{ mm}$
4. CLEAR APERTURE: $> \phi 22.86 \text{ mm}$
5. SURFACE QUALITY: 20-10 SCRATCH-DIG
6. CENTRATION: $< 3 \text{ arcmin}$
7. DIAMETER TOLERANCE: $+0.0/-0.1 \text{ mm}$
8. THICKNESS TOLERANCE: $\pm 0.1 \text{ mm}$
9. COATING: VAR R $<0.25\%$ PER SURFACE FOR 1064 nm, AOI: 0°

FOR INFORMATION ONLY
NOT FOR MANUFACTURING PURPOSES

DRAWING PROJECTION

	NAME	DATE
DRAWN	YB	01/MAY/20
APPROVAL	DM	01/MAY/20

COPYRIGHT © 2020 BY THORLABS

VALUES IN PARENTHESIS ARE CALCULATED AND MAY CONTAIN ROUND OFF ERRORS

THORLABS
www.thorlabs.com

ϕ 25.4 mm f=40 mm FUSED SILICA
PLANO CONVEX LENS, -1064 nm COAT

MATERIAL	UV FUSED SILICA	REV	A
----------	-----------------	-----	---

ITEM #	LA4306-1064	APPROX WEIGHT	5.21 g
--------	-------------	---------------	--------