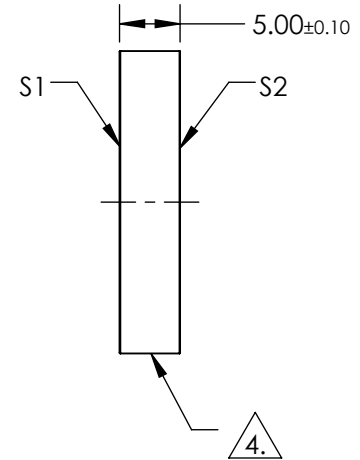
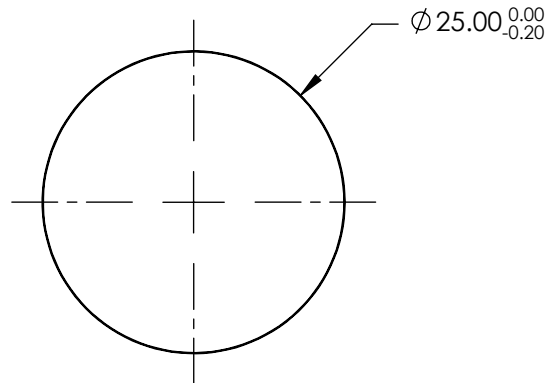


NOTES:

1. SUBSTRATE:  
UV GRADE FUSED SILICA
2. COATING (APPLY ACROSS COATING APERTURE):  
S1 & S2: UV-VIS (250-700nm)  
R(ABS) ≤1.0% @ 350 - 450nm  
R(AVG) ≤1.5% @ 250 - 700nm
3. SURFACE S2 TO BE PARALLEL TO SURFACE S1 TO WITHIN <5 ARCSEC
4. FINE GRIND SURFACE
5. ROHS COMPLIANT



**FOR INFORMATION ONLY:  
DO NOT MANUFACTURE  
PARTS TO THIS DRAWING**

SPECIFICATIONS SUBJECT TO CHANGE WITHOUT NOTICE  
DIMENSIONS ARE FOR REFERENCE ONLY

**EO**® Edmund Optics®

	S1	S2
SHAPE	PLANO	PLANO
SURFACE QUALITY	20-10	20-10
CLEAR APERTURE	Ø20.00	Ø20.00
BEVEL	PROTECTIVE AS NEEDED	PROTECTIVE AS NEEDED

THIRD ANGLE PROJECTION

ALL DIMS IN mm

TITLE	25mm Dia., 5mm Thick, UV-VIS Coated λ/10 Fused Silica Window	
DWG NO	11884	SHEET 1 OF 1