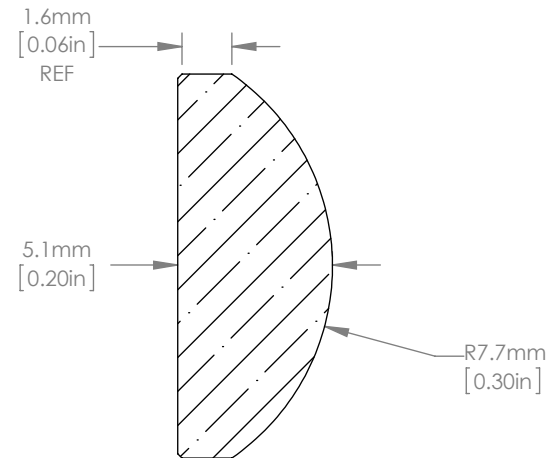
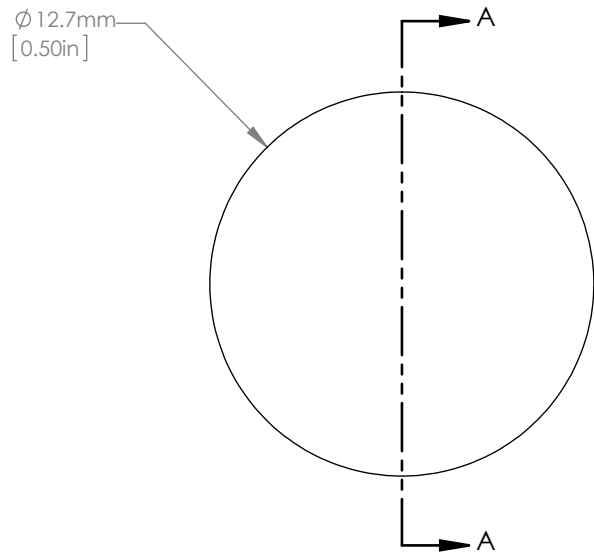




ISOMETRIC VIEW  
SCALE: 1:1



NOTES/SPECIFICATIONS:

1. DESIGN WAVELENGTH: 587.6nm
2. FOCAL LENGTH:  $f= 14.94\text{mm} \pm 1\%$
3. BACK FOCAL LENGTH(REF):  $bf= 11.56\text{mm}$
4. CLEAR APERTURE: >90%
5. SURFACE QUALITY: 20-10 SCRATCH-DIG
6. CENTRATION: <3arcmin
7. DIAMETER TOLERANCE:  $\pm 0.0/-0.1\text{mm}$
8. THICKNESS TOLERANCE:  $\pm 0.1\text{mm}$
9. COATING: VAR R<0.25% PER SURFACE FOR 532nm AND 1064nm

FOR INFORMATION ONLY  
NOT FOR MANUFACTURING PURPOSES

DRAWING PROJECTION			<b>THORLABS</b> www.thorlabs.com	
	NAME	DATE	N-BK7 PLANO-CONVEX LENS D=12.7mm, f=15.0mm, ARC: 532/1064nm	
DRAWN	RJ	03/JAN/11	MATERIAL	
APPROVAL	DD	05/JAN/11	N-BK7	REV B
COPYRIGHT © 2010 BY THORLABS			ITEM #	APPROX WEIGHT
VALUES IN PARENTHESIS ARE CALCULATED AND MAY CONTAIN ROUND OFF ERRORS			LA1540-YAG	0.02kg