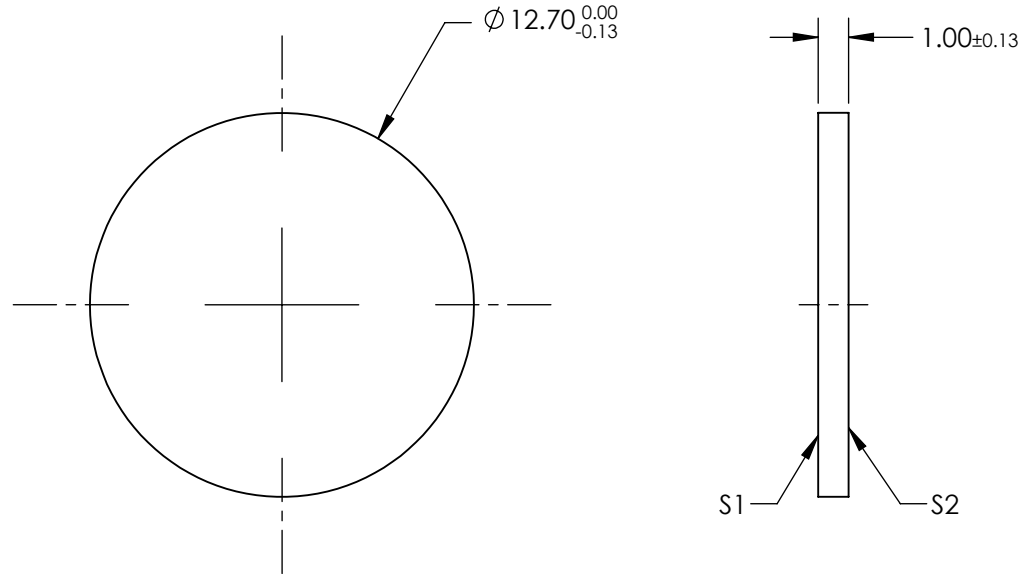


NOTES:

1. SUBSTRATE: Gallium Arsenide (GaAs)
2. SURFACE S2 TO BE PARALLEL WITH S1 TO <3 ARCMIN
3. COATING (APPLY ACROSS CLEAR APERTURE)
S1 & S2: NONE



**FOR INFORMATION ONLY:
DO NOT MANUFACTURE
PARTS TO THIS DRAWING**

SPECIFICATIONS SUBJECT TO CHANGE WITHOUT NOTICE
DIMENSIONS ARE FOR REFERENCE ONLY

	S1	S2
SHAPE	PLANO	PLANO
SURFACE QUALITY	60-40	60-40
SURFACE FLATNESS	$\lambda/10 @ 10.6\mu\text{m}$	$\lambda/10 @ 10.6\mu\text{m}$
CLEAR APERTURE	$\phi 10.795$	$\phi 10.795$
BEVEL	PROTECTED AS NEEDED	PROTECTED AS NEEDED

THIRD ANGLE PROJECTION

ALL DIMS IN

mm

Edmund Optics®

TITLE

12.7mm Dia., 1mm Thick, Uncoated, Gallium Arsenide (GaAs) Window

DWG NO

16800

SHEET
1 OF 1