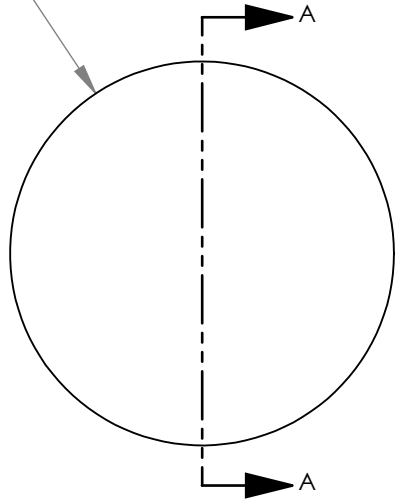
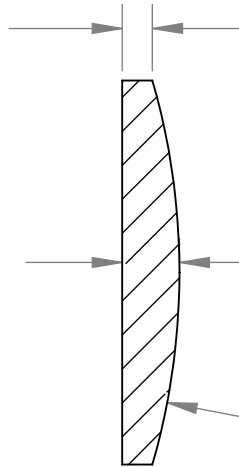


[1.00]
Ø25.4



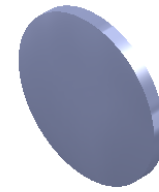
[0.08]
2.0
(REF)



[0.15]
3.8

[1.81]
R46.0

SECTION A-A



1:1 ISOMETRIC VIEW FOR REFERENCE ONLY

NOTES/SPECIFICATIONS:

1. DESIGN WAVELENGTH: 587.6nm
2. FOCAL LENGTH: $f=100.3\text{mm} \pm 1\%$
3. BACK FOCAL LENGTH(REF): $bf=97.7\text{mm}$
4. CLEAR APERTURE: $>90\%$
5. SURFACE QUALITY: 40-20 SCRATCH-DIG
6. CENTRATION: $<3\text{arcmin}$
7. DIAMETER TOLERANCE: $+0.0/-0.1\text{mm}$
8. THICKNESS TOLERANCE: $\pm 0.1\text{mm}$

ALL DIMENSIONS ARE IN THE FORM $\frac{[in]}{mm}$.
THIS DRAWING IS FOR INFORMATION ONLY
NOT INTENDED FOR MANUFACTURING

	NAME	DATE
DRAWN	JC	07/19/2010
ENG APPR.	WD	08/25/2010
MFG APPR.	PM	08/26/2010

PROPRIETARY AND CONFIDENTIAL

THE INFORMATION CONTAINED IN THIS DRAWING IS THE SOLE PROPERTY OF THORLABS, INC. ANY REPRODUCTION IN PART OR AS A WHOLE WITHOUT THE WRITTEN PERMISSION OF THORLABS, INC. IS PROHIBITED.

THORLABS INC. PO BOX 366
NEWTON NJ

TITLE: D=25.40 F=100.00 UV FUSED SILICA
PLANO CONVEX LENS

MATERIAL: UV FUSED SILICA SIZE A REV. B

SCALE: 2:1 SHEET 1 OF 1

DWG. NO. 3300-E01 PART NO. LA4380