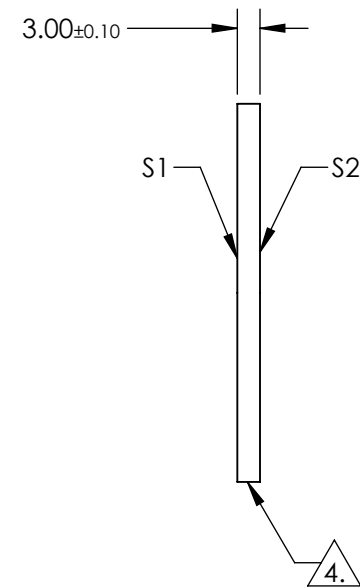
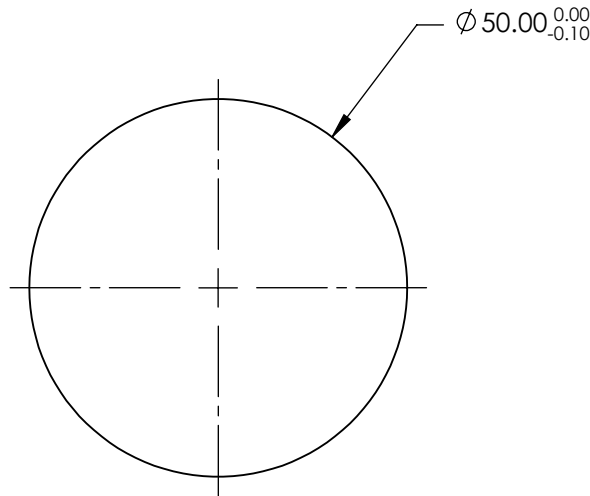
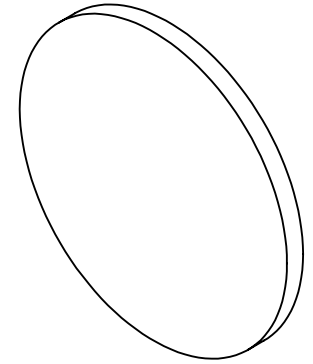


NOTES:

1. SUBSTRATE:  
Silicon (Si)
2. SURFACE S2 TO BE PARALLEL WITH S1 TO <3 ARCMIN
3. COATING (APPLY ACROSS CLEAR APERTURE)  
S1 & S2:  
R(AVG) <1% @ 1650 - 3000nm  
R(ABS) <2% @ 1650 - 3000nm

4. FINE GRIND SURFACE

5. RoHS COMPLIANT



**FOR INFORMATION ONLY:  
DO NOT MANUFACTURE  
PARTS TO THIS DRAWING**

SPECIFICATIONS SUBJECT TO CHANGE WITHOUT NOTICE  
DIMENSIONS ARE FOR REFERENCE ONLY

	S1	S2
SHAPE	PLANO	PLANO
CLEAR APERTURE	45.00 mm	45.00 mm
SURFACE QUALITY	60-40	60-40
SURFACE FLATNESS	1λ	1λ
BEVEL	PROTECTIVE AS NEEDED	PROTECTIVE AS NEEDED

THIRD ANGLE PROJECTION

ALL DIMS IN

mm

**EO**® Edmund Optics®

TITLE

50mm DIA. X 3.0mm THICKNESS 1.65-3μm  
COATED SILICON WINDOW

DWG NO

17203

SHEET  
1 OF 1