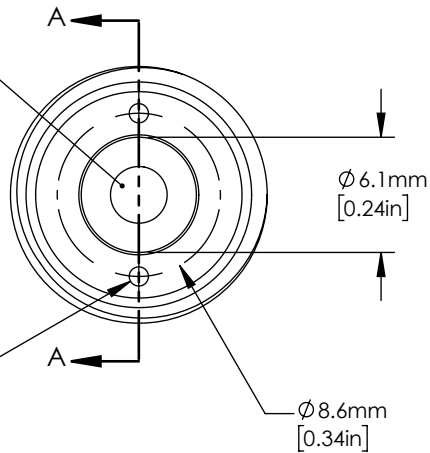
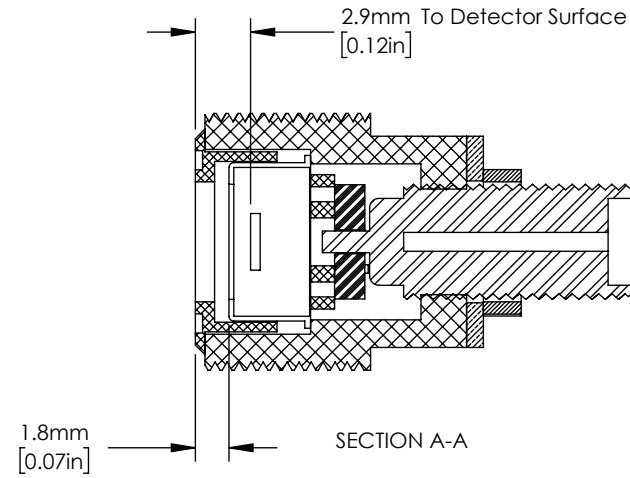


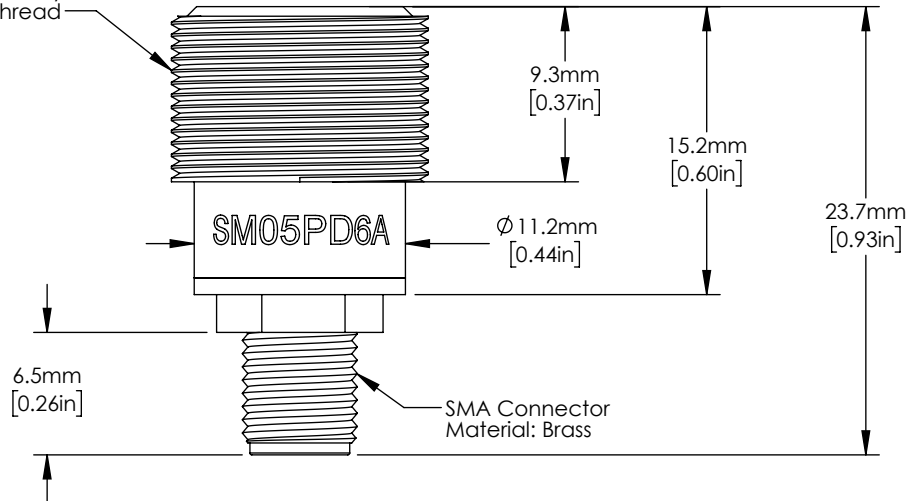
FDG03 Ge Photodiode
 Active Area: 7.1 mm²
 Range: 800 - 1800 nm
 Cathode Grounded



Use with Adjustable
 Spanner Wrench



SM05 (Ø0.535-40)
 External Thread



FOR INFORMATION ONLY
 NOT FOR MANUFACTURING PURPOSES

DRAWING PROJECTION

| | NAME | DATE |
|----------|------|-----------|
| DRAWN | WKC | 29/MAR/18 |
| APPROVAL | EC | 30/MAR/18 |

COPYRIGHT © 2018 BY THORLABS

VALUES IN PARENTHESIS ARE CALCULATED
 AND MAY CONTAIN ROUND-OFF ERRORS

THORLABS
 www.thorlabs.com

SM05 Mounted Ge-Photodiode

MATERIAL See Drawing REV D

ITEM # SM05PD6A APPROX WEIGHT .005 kg