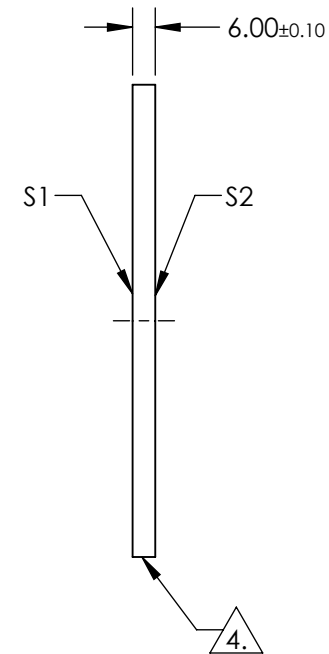
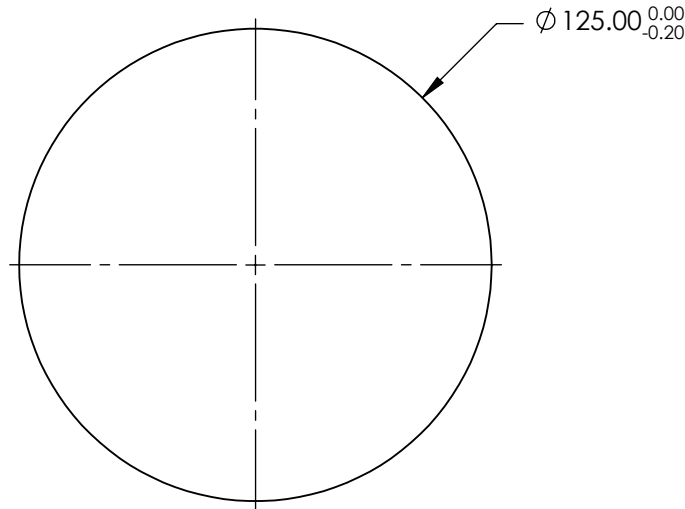


NOTES:

1. SUBSTRATE: Fused Silica (Corning 7980)
2. COATING (APPLY ACROSS CLEAR APERTURE)
 S1 & S2: R(ABS) ≤0.25% @ 880nm
 R(AVG) ≤1.25% FROM 400 - 870nm
 R(AVG) ≤1.25% FROM 890 - 1000nm
3. SURFACE S1 TO BE PARALLEL WITH SURFACE S2 TO WITHIN < 10 ARCSEC

4. FINE GRIND SURFACE

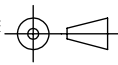
5. ROHS COMPLIANT



**FOR INFORMATION ONLY:
DO NOT MANUFACTURE
PARTS TO THIS DRAWING**

SPECIFICATIONS SUBJECT TO CHANGE WITHOUT NOTICE
DIMENSIONS ARE FOR REFERENCE ONLY

	S1	S2
SHAPE	PLANO	PLANO
SURFACE QUALITY	40-20	40-20
CLEAR APERTURE	$\varnothing 112.50$	$\varnothing 112.50$
BEVEL	PROTECTED AS NEEDED	PROTECTED AS NEEDED

THIRD ANGLE PROJECTION 

ALL DIMS IN mm

 **Edmund Optics®**

TITLE	125mm Dia., 6mm Thick, VIS-NIR Coated $\lambda/10$ Fused Silica Window		
DWG NO	22071	SHEET	1 OF 1