

NOTES:

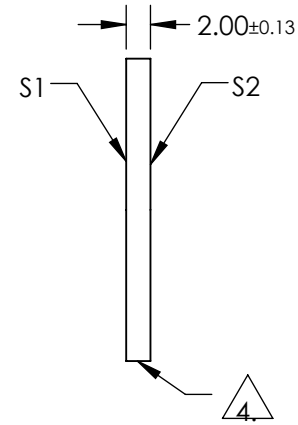
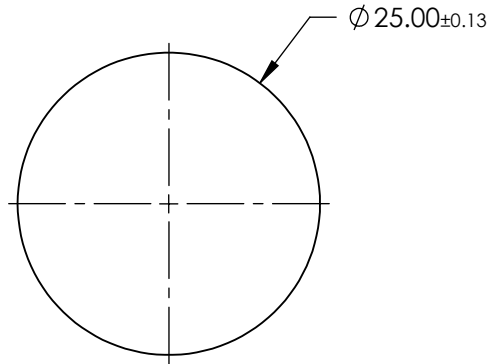
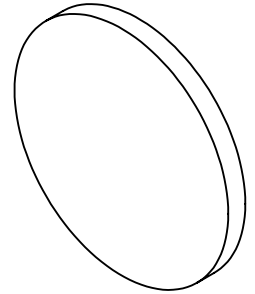
1. SUBSTRATE MATERIAL:
ZINC SELENIDE (ZNSE)
2. COATING (APPLY ACROSS CLEAR APERTURE)

S1:
50/50 ± 25% @ 2 - 20µm

S2:
AR COATING

3. RoHS COMPLIANT

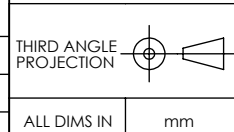
 4. GROUND SURFACE



**FOR INFORMATION ONLY:
DO NOT MANUFACTURE
PARTS TO THIS DRAWING**

SPECIFICATIONS SUBJECT TO CHANGE WITHOUT NOTICE
DIMENSIONS ARE FOR REFERENCE ONLY

	S1	S2
SHAPE	PLANO	PLANO
SURFACE QUALITY	60-40	60-40
SURFACE FLATNESS	3λ/4	3λ/4
CLEAR APERTURE	Ø22.50	Ø22.50



 **Edmund Optics®**

TITLE	25mm Diameter, 2-20µm Zinc Selenide IR Plate Beamsplitter	
DWG NO	36658	SHEET 1 OF 1