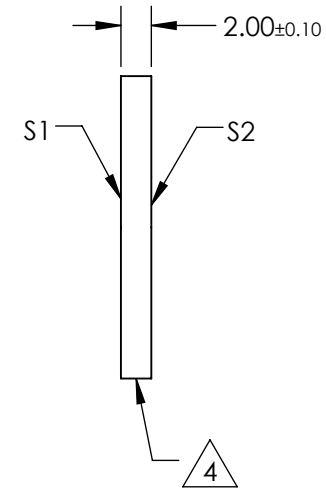
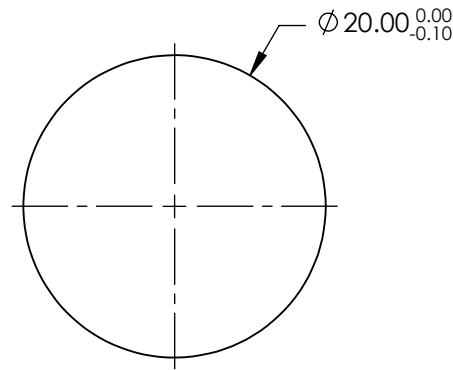
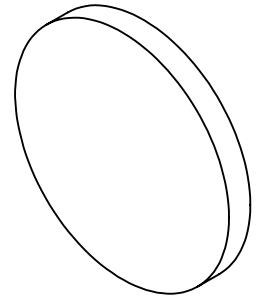


NOTES:

1. SUBSTRATE:  
FUSED SILICA (CORNING 7980)
2. S2 TO BE PARALLEL WITH S1 TO WITHIN <1' ARCMIN
3. COATING (APPLY ACROSS CLEAR APERTURE)  
S1 & S2: R(AVG) ≤0.4% @ 425 - 675nm
4. FINE GRIND SURFACE
5. ROHS COMPLIANT



**FOR INFORMATION ONLY:  
DO NOT MANUFACTURE  
PARTS TO THIS DRAWING**

SPECIFICATIONS SUBJECT TO CHANGE WITHOUT NOTICE  
DIMENSIONS ARE FOR REFERENCE ONLY

	S1	S2
SHAPE	PLANO	PLANO
SURFACE QUALITY	40-20	40-20
CLEAR APERTURE (mm)	Ø18.00	Ø18.00
BEVEL	PROTECTIVE AS NEEDED	PROTECTIVE AS NEEDED

THIRD ANGLE PROJECTION

ALL DIMS IN mm

**EO**® Edmund Optics®

TITLE

20mm Dia., 2mm Thick, VIS 0° Coated, λ/4  
Fused Silica Window

DWG NO

18326

SHEET  
1 OF 1