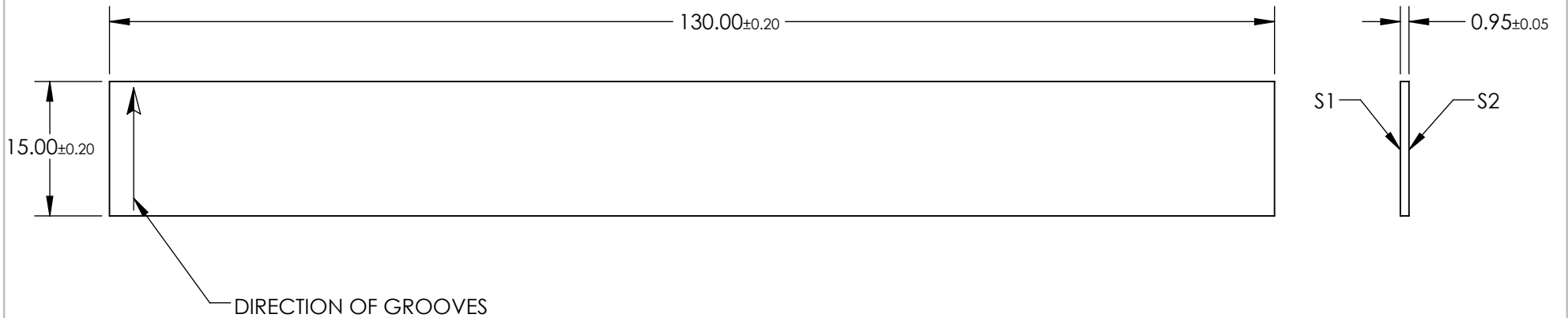
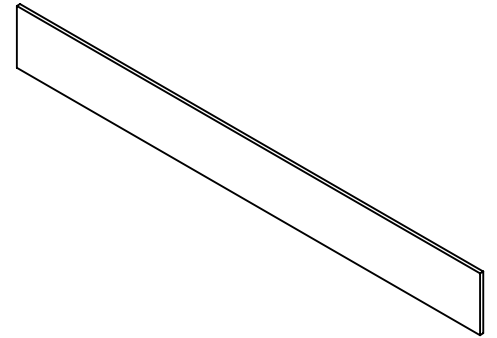


NOTES:

1. SUBSTRATE MATERIAL:
FUSED SILICA
2. COATING:
S1: SURFACE ETCHED MULTI-LAYER DIELECTRIC GRATING
S2: ANTI-REFLECTION (AR)
3. DESIGN WAVELENGTH: 1030 ±10nm
ANGLE OF INCIDENCE: 63.6 ±1°
GROOVE DENSITY: 1739.13 GROOVES/mm
GROOVE UNIFORMITY: 0.001 GROOVES/mm
4. RoHS COMPLIANT

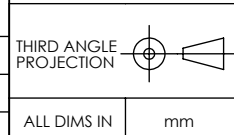


**FOR INFORMATION ONLY:
DO NOT MANUFACTURE
PARTS TO THIS DRAWING**

SPECIFICATIONS SUBJECT TO CHANGE WITHOUT NOTICE
DIMENSIONS ARE FOR REFERENCE ONLY

EO® **Edmund Optics**®

	S1	S2
SHAPE	PLANO	PLANO
SURFACE QUALITY	60-40	60-40
CLEAR APERTURE	125.00 x 14.00	125.00 x 14.00
BEVEL	PROTECTED AS NEEDED	PROTECTED AS NEEDED



TITLE	DWG NO	SHEET
II-VI LightSmyth™ 1030nm, 1739.13 Grooves/mm, 130 x 15mm Transmission Diffraction Grating	16867	1 OF 1

ALL DIMS IN mm