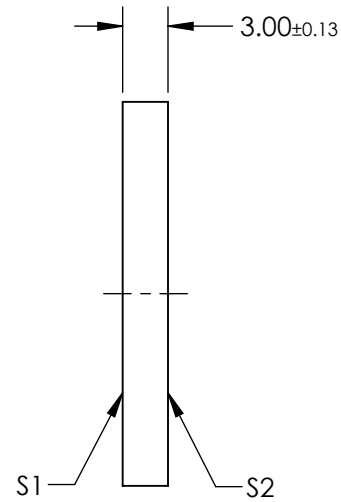
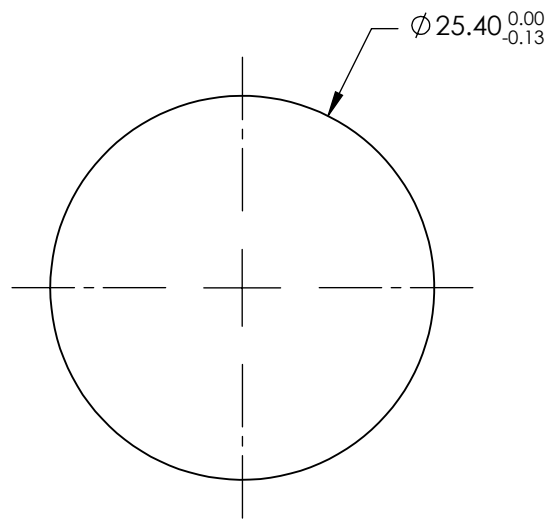


NOTES:

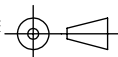
1. SUBSTRATE: AMTIR-1 (Ge33As12Se55)
2. SURFACE S2 TO BE PARALLEL WITH S1 TO <3 ARCMIN
3. COATING (APPLY ACROSS CLEAR APERTURE)
S1 & S2: NONE



**FOR INFORMATION ONLY:
DO NOT MANUFACTURE
PARTS TO THIS DRAWING**

SPECIFICATIONS SUBJECT TO CHANGE WITHOUT NOTICE
DIMENSIONS ARE FOR REFERENCE ONLY

	S1	S2
SHAPE	PLANO	PLANO
SURFACE QUALITY	40-20	40-20
SURFACE FLATNESS	$\lambda/10 @ 10.6\mu\text{m}$	$\lambda/10 @ 10.6\mu\text{m}$
CLEAR APERTURE	$\varnothing 21.59$	$\varnothing 21.59$
BEVEL	PROTECTED AS NEEDED	PROTECTED AS NEEDED

THIRD ANGLE PROJECTION 

ALL DIMS IN mm

 **Edmund Optics®**

TITLE	25.4mm Dia., 3mm Thick, Uncoated, AMTIR-1 Window		
DWG NO	16797	SHEET	1 OF 1