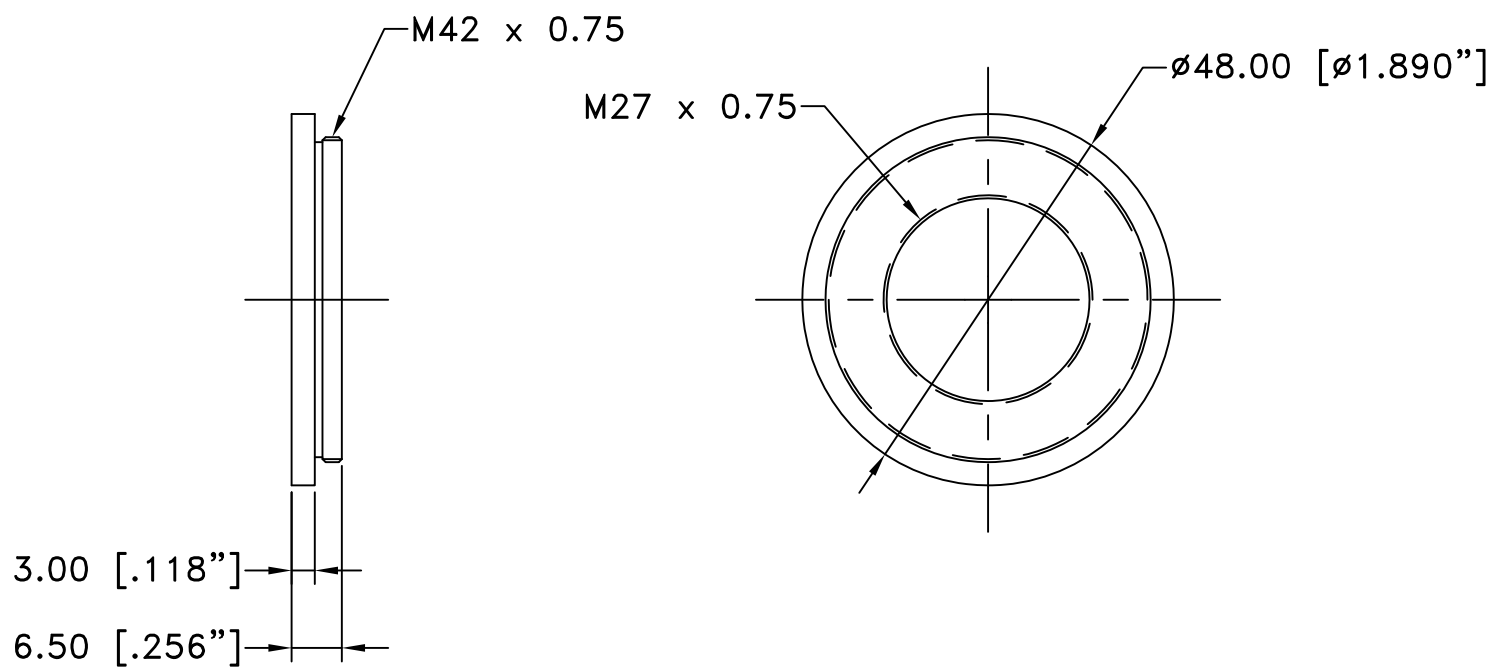




REVISIONS				
ZONE	REV	DESCRIPTION	DATE	APPROVED



**NOTES:**

1. SURFACE ANODIZED BLACK.
2. MATL.: AL 6061-T6

**ALL DIM ARE mm [inches] AND ARE FOR REFERENCE ONLY AND ARE SUBJECT TO CHANGE.**

**INFINITY** Photo-Optical Company  
[www.infinity-usa.com](http://www.infinity-usa.com)

**M27 ADAPTER**

<b>Date: 05/09/12 MB</b>	SIZE A	FSCM NO.	DWG NO. <b>770 518</b>	REV -
<b>Modified:</b>	SCALE <b>NONE</b>	-	SHEET <b>1 OF 1</b>	

