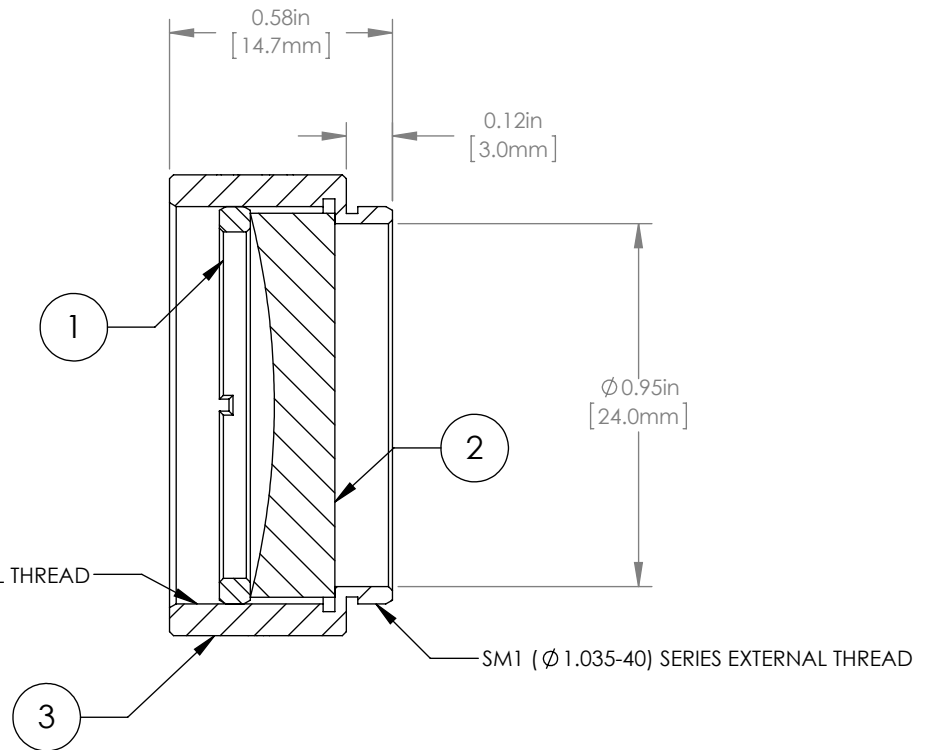
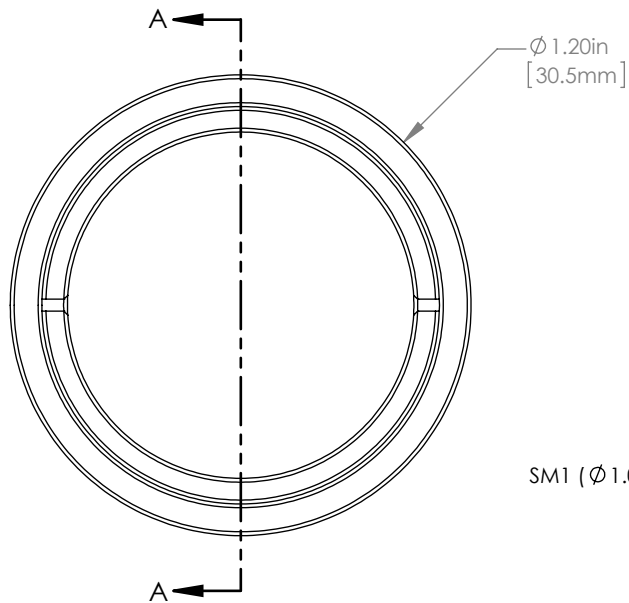


	PART DESCRIPTION	MATERIAL
①	SM1RR	ANODIZED ALUMINUM
②	LC1120-B	N-BK7
③	ENGRAVED HOUSING	ANODIZED ALUMINUM



NOTES/SPECIFICATIONS:

1. DESIGN WAVELENGTH: 633nm
2. FOCAL LENGTH: $f = -99.9\text{mm} \pm 1\%$
3. WORKING DISTANCE (REF): -91.6mm
4. CLEAR APERTURE: $> \text{Ø} 22.86\text{mm}$
5. SURFACE QUALITY: 40-20 SCRATCH-DIG
6. COATING: BBAR $R_{\text{avg}} < 0.5\%$ FROM 650-1050nm, AOI: 0° , ON OUTER OPTICAL SURFACES

FOR INFORMATION ONLY
NOT FOR MANUFACTURING PURPOSES

DRAWING PROJECTION						THORLABS www.thorlabs.com		
NAME	DATE	Ø 1" MOUNTED PLANO-CONCAVE LENS, $f = -100\text{mm}$, -B COATED				REV	A	
DRAWN	GG	20/NOV/15	MATERIAL				SEE TABLE	
APPROVAL	DD	20/NOV/15	ITEM #				LC1120-B-ML	APPROX WEIGHT
COPYRIGHT © 2015 BY THORLABS				VALUES IN PARENTHESIS ARE CALCULATED AND MAY CONTAIN ROUND OFF ERRORS				7 g