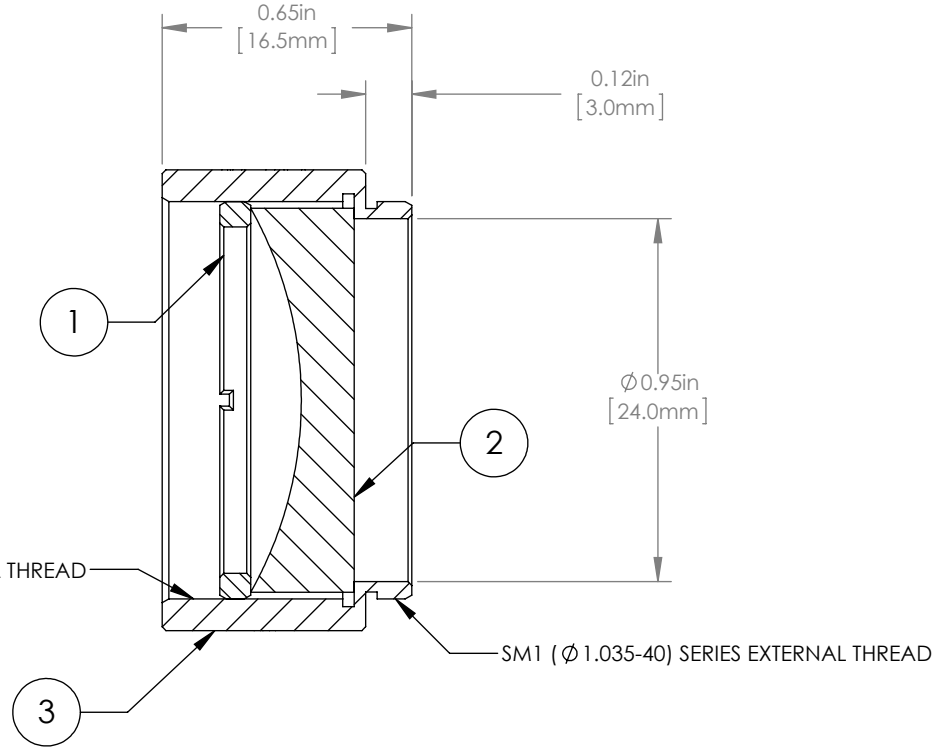
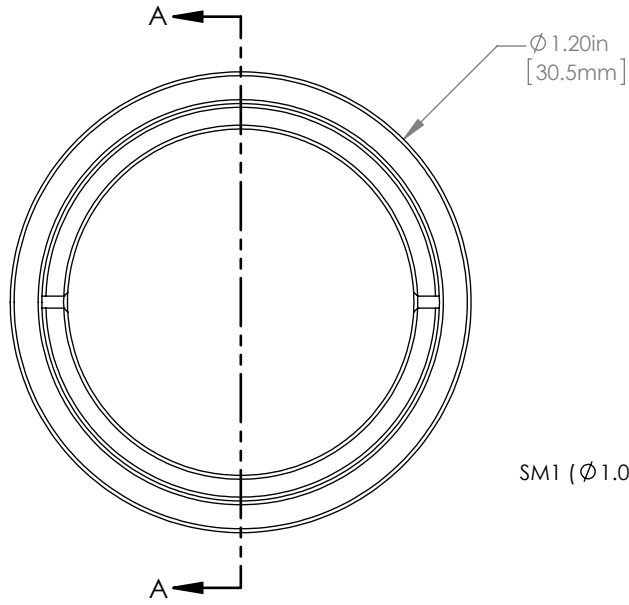


	PART DESCRIPTION	MATERIAL
①	SM1RR	ANODIZED ALUMINUM
②	LC1715-C	N-BK7
③	ENGRAVED HOUSING	ANODIZED ALUMINUM



NOTES/SPECIFICATIONS:

- DESIGN WAVELENGTH: 633nm
- FOCAL LENGTH: $f = -50.0\text{mm} \pm 1\%$
- WORKING DISTANCE (REF): -39.6mm
- CLEAR APERTURE: $> \text{Ø} 22.86\text{mm}$
- SURFACE QUALITY: 40-20 SCRATCH-DIG
- COATING: BBAR $R_{\text{avg}} < 0.5\%$ FROM 1050-1700nm, AOI: 0° , ON OUTER OPTICAL SURFACES

FOR INFORMATION ONLY
NOT FOR MANUFACTURING PURPOSES

DRAWING PROJECTION			THORLABS www.thorlabs.com	
NAME	DATE	Ø 1" MOUNTED PLANO-CONCAVE LENS, $f = -50\text{mm}$, -C COAT		
DRAWN	GG	20/NOV/15	REVISION	
APPROVAL	DD	20/NOV/15	REV A	
COPYRIGHT © 2015 BY THORLABS			MATERIAL	
VALUES IN PARENTHESIS ARE CALCULATED AND MAY CONTAIN ROUND OFF ERRORS			SEE TABLE	
ITEM #		APPROX WEIGHT		
LC1715-C-ML		7 g		