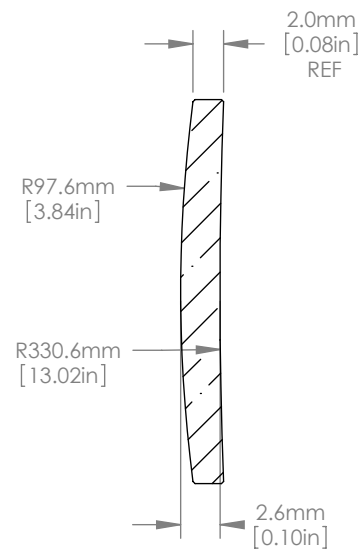
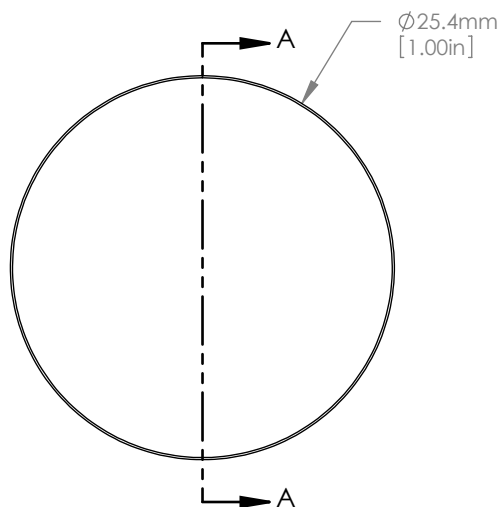




Scale 1:1



NOTES/SPECIFICATIONS:

1. DESIGN WAVELENGTH: 588nm
2. FOCAL LENGTH: $f=300.0\text{mm} \pm 1\%$
3. BACK FOCAL LENGTH(REF): $bf=297.5\text{mm}$
4. CLEAR APERTURE: $>90\%$
5. SURFACE QUALITY: 40-20 SCRATCH-DIG
6. CENTRATION: $\leq 3\text{arcmin}$
7. DIAMETER TOLERANCE: $+0.0/-0.1\text{mm}$
8. THICKNESS TOLERANCE: $\pm 0.1\text{mm}$

FOR INFORMATION ONLY
NOT FOR MANUFACTURING PURPOSES

DRAWING PROJECTION			THORLABS www.thorlabs.com D=25.4 F=300.0mm UVFS POSITIVE MENISCUS LENS	
	NAME	DATE		
DRAWN	GG	18/NOV/10	MATERIAL UV GRADE FUSED SILICA	
APPROVAL	JC	13/DEC/10		
COPYRIGHT © 2010 BY THORLABS			ITEM #	APPROX WEIGHT
VALUES IN PARENTHESIS ARE CALCULATED AND MAY CONTAIN ROUND OFF ERRORS			LE4329	0.02 kg
			REV	B