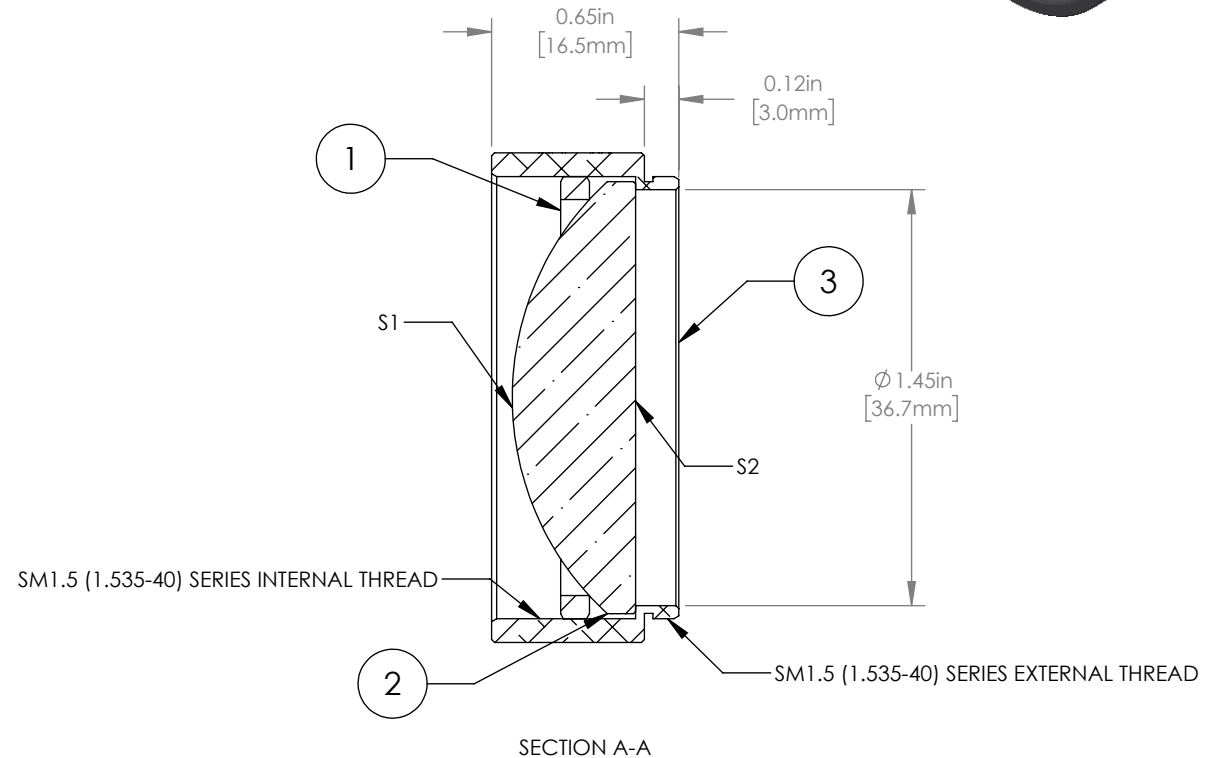
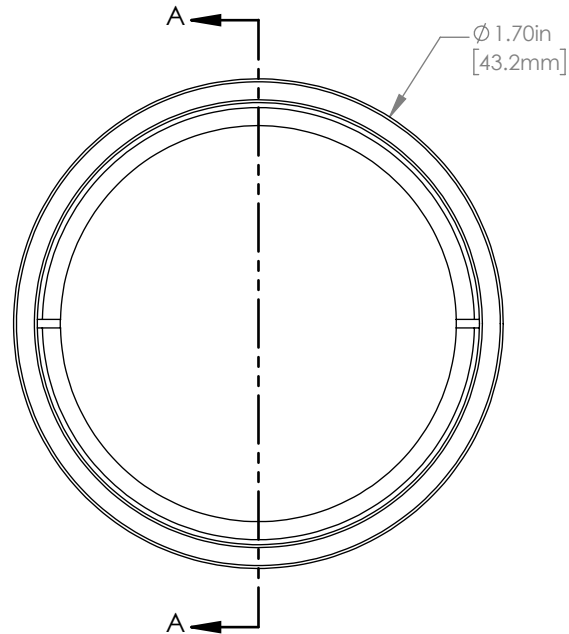


	PART DESCRIPTION	MATERIAL
①	SM1.5RR	ANODIZED ALUMINUM
②	LA1385	N-BK7
③	ENGRAVED HOUSING	ANODIZED ALUMINUM



NOTES/SPECIFICATIONS:

- DESIGN WAVELENGTH: 587.6 nm
- FOCAL LENGTH: $f=50.0 \text{ mm} \pm 1\%$
- WORKING DISTANCE (REF): 39.8 mm
- CLEAR APERTURE: $>\text{Ø}34.29 \text{ mm}$
- SURFACE QUALITY: 40-20 SCRATCH-DIG

FOR INFORMATION ONLY
NOT FOR MANUFACTURING PURPOSES

DRAWING PROJECTION		THORLABS www.thorlabs.com	
NAME	DATE	MOUNTED Ø38.1 mm f=50.0 mm N-BK7 PLANO CONVEX LENS	
DRAWN	CP	19/NOV/19	MATERIAL
APPROVAL	DD	19/NOV/19	SEE TABLE
COPYRIGHT © 2020 BY THORLABS		ITEM #	APPROX WEIGHT
VALUES IN PARENTHESIS ARE CALCULATED AND MAY CONTAIN ROUND OFF ERRORS		LA1385-ML	32 g
		REV	A