

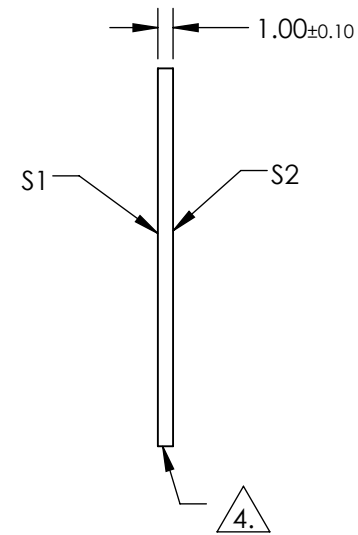
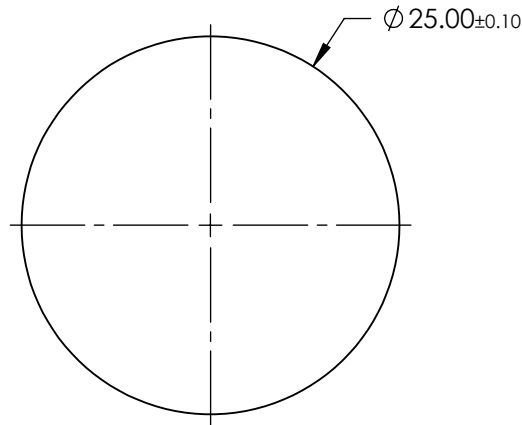
NOTES:

1. SUBSTRATE:
SAPPHIRE (AL₂O₃)
 2. SURFACE S2 TO BE PARALLEL WITH SURFACE S1 TO WITHIN ≤ 3.5 ARCMIN
 3. COATING (APPLY ACROSS CLEAR APERTURE)
- S1 & S2: R(AVG) ≤ 1.75% @ 400 - 700nm

4. FINE GRIND SURFACE

5. ROHS COMPLIANT

**FOR INFORMATION ONLY:
DO NOT MANUFACTURE
PARTS TO THIS DRAWING**



SPECIFICATIONS SUBJECT TO CHANGE WITHOUT NOTICE
DIMENSIONS ARE FOR REFERENCE ONLY

	S1	S2
SHAPE	PLANO	PLANO
CLEAR APERTURE	Ø22.50	Ø22.50
SURFACE FLATNESS	2λ	2λ
SURFACE QUALITY	80-50	80-50
BIREFRINGENCE (n _o -n _e)	0.008	0.008
BEVEL	PROTECTIVE AS NEEDED	PROTECTIVE AS NEEDED



ALL DIMS IN mm

EO® **Edmund Optics**®

TITLE

25mm Dia., 1mm Thick, MgF2 AR Coated
Sapphire Window

DWG NO

20681

SHEET
1 OF 1